



LS COLLEGE

HIGHER EDUCATION

Course Guide 2018

LSCollege.ac.uk/Higher-Education
020 3757 3400

APPLY TODAY TO START WITH US IN SEPTEMBER 2018!

You may know exactly which Higher Education (HE) course you want to study – or you may need some guidance on what your next step should be. In this guide, you can discover the excellent range of high quality HE courses we offer at Lewisham Southwark College, and also find out about where these qualifications can lead you.

Once you've had a look through this guide and have a course in mind, we hope you'll want to find out more! Our Admissions and Student Support Centre staff (who you can call on 020 3757 3000) will be very happy to answer any questions you may have, and can also arrange for you to visit our brand new, state-of-the-art Southwark campus, which is the home of our HE learning hub.

There are two ways to apply for a course. You can apply directly to the College, either by visiting our website (LSCollege.ac.uk) or filling in an application form which you can request from our Student Recruitment department. Alternatively you can apply via UCAS at ucas.com

Come and see us at our next open day

Southwark Campus:

› Wednesday 20 June 2018

Register online today at
Higher@LSCollege.ac.uk

Strong links

with Higher Education providers including University of Greenwich, University of East London and Canterbury Christ Church University



CONTENTS

INTRODUCTION

- 2** Apply Today / Open events
- 3** Contents / Get in touch
- 4** Considering us
- 5** Why study here?
- 6** Our HE Campus
- 8** Inspiring teaching and learning
- 9** Staff case study: Jane Eley
- 10** Where our courses get you
- 12** Clubs, societies and activities
- 14** International students
- 16** Student profile: Louise Carney
- 18** Accommodation
- 20** Fees and Loans
- 22** Help and support
- 24** Our Qualifications explained
- 25** How to apply

COURSES

- 26** HNC in Performing Arts (Dance)
- 28** Foundation Degree in Art and Design
- 30** Foundation Degree in Music and Production
- 32** Foundation Degree in Business Management
- 34** Foundation Degree in Business Information Technology
- 36** HNC in Business
- 38** HND in Business
- 40** MBA (Masters of Business Administration)
- 42** MA (Master of Arts) in Business Management
- 44** FdSc Cyber Security
- 46** FdSc Network and Security Technologies
- 48** Foundation Degree in Children and Young People
- 50** Foundation Degree in Early Years
- 52** Foundation Degree in Health and Social Care
- 54** Teaching courses at LS College
- 56** Diploma in Teaching English
- 58** Diploma in Teaching Maths
- 60** Education and Training pathway
- 64** Foundation Degree in Tourism and Hospitality Management

GET IN CONTACT

If you would like any advice or guidance about the College or our courses, please get in contact.

info@LSCollege.ac.uk
LSCollege.ac.uk/Higher-Education
 020 3757 3400

We are delighted that you are considering Lewisham Southwark College for your Higher Education studies.

Choosing to study with us will put you right at the heart of London, in our brand new Southwark campus, where you will become part of a friendly, supportive community within our dedicated Higher Education student hub.

Our Higher Education courses are carefully selected and developed to equip students with the right blend of skills, knowledge and experience to be successful in their chosen field. Students benefit from expert teaching by tutors with industry experience, from studying in an innovative learning environment, and from our excellent connections with a wide range of businesses.

Every year we welcome to the College thousands of students, including many international applicants, and we provide them with the skills and knowledge that they need to progress to higher study or to a fulfilling career. We hope that you will decide to join us and look forward to welcoming you to the College.

WHY STUDY FOR YOUR HIGHER EDUCATION QUALIFICATION AT LEWISHAM SOUTHWARK COLLEGE?

- Strong relationship with leading businesses across a range of fields, enabling valuable work experience opportunities
- Lower tuition fees than universities (around £6,000 compared to over £9,000 a year)
- High ratio of tutor to student teaching
- Option to gain a shorter HE qualification and enter employment, or continue to a 'top-up' third year, gaining a full degree
- Central London location in easy reach of public transport
- Fantastic state-of-the-art facilities equipped with the latest learning technologies

High ratio of tutor to student teaching



Lower tuition fees than universities

Central London

location in easy reach of public transport

OUR HE CAMPUS

Located on ‘The Cut’, our HE campus is opposite Southwark tube station and just a few minutes walk from Waterloo station, with numerous bus routes passing close by – making it easy to travel to College wherever you are living.

Having recently undergone a £41 million renovation, our state-of-the-art campus offers an innovative and dynamic learning experience. Students benefit from a dedicated HE hub with high-tech specialist facilities, classrooms and labs fully installed with the latest learning technologies, and open learning spaces.

Our HE campus is a stone’s throw from London’s vibrant South Bank creative arts district, with renowned theatres the Old Vic, the Young Vic, the Globe, and the National Theatre, as well as the IMAX cinema, all just a short walk away. Some of the Capital’s most iconic landmarks – such as Big Ben, the London Eye and the Shard – provide an inspiring backdrop to your studies.

The College is also surrounded by a wealth of cafés, restaurants and street stalls, offering everything from curry to tapas and English pub grub to Thai food – so there are plenty of places to go when you need a break from your studies.





SOUTHWARK CAMPUS

25 The Cut, London, SE1 8LF

Buses: 1, 4, 26, 45, 59, 63, 100, 155, 168, 171, 172, 176, 188, 381

Tube: Waterloo or Southwark

Rail: Waterloo or Waterloo East



INSPIRING TEACHING AND LEARNING

Learning at Higher Education (HE) level is an inspiring but challenging experience which requires advanced study skills and a new, more analytical way of thinking. At Lewisham Southwark College we will give you all the support you need to develop these skills so that you can get the most out of your course.

While academic study is a key component of every HE course, our students don't just sit behind a desk to learn. The College is an interactive environment where you will be encouraged to ask questions and enter into debate with others. Depending on your course, you will study through a combination of classroom based sessions, workshops and external visits and trips.

All of our HE courses have a strong focus on the world of work. Students are taught by tutors with relevant industry experience, and learn in state-of-the-art facilities which reflect what they will find in the workplace.

Drawing on our excellent contacts across a range of industries, most of our courses include the opportunity to undertake work experience, which adds another dimension to your studies and allows you to apply what you've learned in the real world.

Following successful completion of a two-year Foundation degree you might opt to stay at the College to top up your qualification to a full BA Honours degree or you might choose to enter employment. Some courses have progression routes to top-up Honours degrees at our partner universities.

When you decide to study for an HE course at Lewisham Southwark College you become part of a thriving community. In their feedback our students tell us that the College environment is supportive, friendly and informal, but professional. It's a place where - in exchange for your hard work - you will receive all the support you need to succeed.

See information about our Help and Support services on pages 22-23.

STAFF CASE STUDY

JANE ELEY

Teacher Training programme area leader Jane Eley has always had a passion for helping students to achieve their potential. Having worked for the College for 20 years, her experiences have ranged from helping Rwandan refugees to progress to university to researching the impact of attendance and punctuality on students' success.

She says: "I didn't truly appreciate the value of education until my late 20s. Having gained some experience in the sector, I realised I wanted to take the next step and share my experiences and knowledge to train the next generation of teachers."

While balancing the complex needs of running a course is challenging, it is also very varied. In addition to classroom-based teaching, Jane observes and assesses her students' teaching practice in the classroom – and enjoys seeing them progressing through the ranks of teaching.

"The best thing about my job is seeing a student going from a Grade 3 to a Grade 1, and then graduating after two years of hard work," says Jane. "Seeing my students in their graduation robes, celebrating with family and friends, makes it all worthwhile!"

She adds: "Teaching requires patience, commitment, hard work and above all, teamwork. It's not just a job, it's a vocation."



WHERE OUR COURSES GET YOU

From the day you arrive at Lewisham Southwark College, our focus is on ensuring you gain the skills and knowledge you need to succeed in your chosen field.

Having successfully completed an HE course with us, you may choose to 'top up' your qualification to an Honours Degree with one of our respected University partners – in fact, over 90 percent of our students take this option. This enables you to deepen your knowledge, specialise in an area which interests you, and enter employment at a higher level.

Alternatively you might decide that you want to go straight into the world of work and start to make your mark in your chosen sector. The College works closely with more than 300 different businesses so that work placements, visits and sessions delivered by industry professionals are included in our courses – and you'll find that our business links are very helpful when it comes to finding your first job.

We have a great track record for employability, with most of our students employed within six months of completing their qualifications. Once in the workplace, the technical, professional and life skills you will have gained on one of our practical courses will ensure that you have what it takes to climb the career ladder. Within three to five years of finding a job, many of our graduates are working in management positions.

Once you have completed your HNC, HND or Degree we hope you'll return to study at postgraduate level with us.

After your studies you'll be eligible to join our alumni society which offers support and advice for graduates.



“

Within three to five years of finding a job, many of our graduates are working in management positions

”



CLUBS, SOCIETIES AND ACTIVITIES

The College is not just a place to study, but a community where we hope you'll feel at home. Making new friends and engaging in new activities is all part of the experience, and a great way of doing this is to get involved in our clubs, societies and activities. There's lots on offer, from sports, yoga, dance and cookery clubs to our Law Society and our vibrant range of faith societies.

Getting to know other students from different courses will really add to your College experience: it's always great to share ideas and get new perspectives on what you're learning. There are lots of opportunities to meet people informally around campus, including our state-of-the-art Learning Centres, which have designated spaces for HE students, and our open study areas. Our coffee shops also offer the perfect place to get together for a chat.

The College has an active Students' Union which organises its own activities, events, clubs and societies to help make your time at College fun as well as educational. The Lewisham Southwark College Students' Union team is there to provide advice and support for any student who has a problem or needs representation, and meets regularly with staff and Governors to make sure your views are represented.

Another great benefit of belonging to the Students' Union is the NUS Extra Card which costs £12 and entitles you to a fantastic range of discounts at shops and entertainment venues across London.

Find out more at
nus.org.uk/en/nus-extra/

INTERNATIONAL STUDENTS

Lewisham Southwark College is a friendly, supportive community of over 7,000 students, representing a total of 79 different nationalities. It's a great choice for international students who want to study on a course that combines academic and work-related study, while immersing themselves in the culture of England's capital city.

At our Southwark campus, international students benefit from competitively-priced Higher Education courses, high staff to student ratios and an innovative, dynamic learning experience. Our Student Support team are always on hand to lend a friendly ear to students who need advice on fees and funding, visa requirements and other issues.

One of the aspects of Higher Education that can be a concern for international students is whether their level of English will be developed enough for them to succeed on the course.

At Lewisham Southwark College we provide as much support as you need in this area and we are also an official tests centre for IELTS (International English Language Testing System).

Our international students have a high success rate in their final exams and leave us ready to take their next steps – whether those are in further study or work.



STUDENT CASE STUDIES

LOUISE CARNEY



At the age of 16 Louise enrolled at the College for two years on the L3 Extended Diploma in Music. During which time she was highly successful as a performer and student. She then took some time away from education before deciding that what she really wanted to do was pursue music by studying for a degree in performance and production.

Why did you choose Lewisham Southwark College?

I previously attended Lewisham Southwark College in 2010 and completed my BTEC level 3 in Music. My experience was very good as the teachers were committed and enthusiastic, leaving a good impression on me. After a break from education, I decided to go back to LS Collge to help further my music career. This course was most suited to my needs.

What are your career ambitions? What will you do after completing the course?

I'm still in the process of deciding my career path in music as I'm only in my first year. After completing my two year course, I will attend the University of East London to complete my 3rd year to achieve my BA in Music.

What do you think is the benefit - for you - of having a Higher Education qualification?

I think having a HE qualification will benefit me in bettering my CV and progressing towards a degree.

“

**My high point so far is my growing confidence.
I've enjoyed working and performing with my
fellow classmates and musicians**

”

What is the high point of your course so far, and what have you enjoyed doing?

My high point so far is my growing confidence. I've enjoyed working and performing with my fellow classmates/musicians.

Would you recommend the course to others and if so, why?

Yes, I would recommend this course as it prepares you for the music industry with a realistic hands-on approach. Definitely a confidence builder.



ACCOMMODATION

Studying in London means that there's a wide range of different types of accommodation on offer including halls of residence, flat and house shares with other students, and house-stays with local families.

Although Lewisham Southwark College doesn't have accommodation of its own, our Student Services advisers can help you find a safe, comfortable place to live by referring you to providers such as Unite Students (unitestudents.com)

and Spare Room (spareroom.co.uk), as well as local estate agents.

CONTACT INFO:

unitestudents.com
spareroom.co.uk

“

Our Student Services advisers can help you find a safe, comfortable place to live by referring you to providers such as Unite Students and Spare Room as well as local estate agents

”

FEES AND LOANS

Studying can be expensive, but there are a range of financial support options available to cover both tuition fees and living costs while you're studying.

Student loans:

Tuition Fee Loan

The Tuition Fee Loan covers your tuition fees throughout your course, and is paid directly to the College. You start paying the loan, and interest on the loan, back once you are working and your income is over £21,000 a year. Your monthly repayments will be 9 percent of your income over this amount.

Maintenance Loan

The Maintenance Loan helps with living costs such as rent and bills and is paid in three instalments (at the start of each term). For 2018, the loan can be up to £11,000 a year, but this will depend on your circumstances and household income (ie what your parents or partner earn).

For more information on student loans and how to apply, please visit gov.uk/student-finance.

Advanced Learner Loan

The Advanced Learner Loan is designed to support people aged 19 or above with the cost of their tuition fees on Level 3 to Level 6 courses, including Access to Higher Education diplomas. The loan, which is not means-tested and does not require a credit check, is designed to pay for all or part of the tuition fee. Repayments are only taken if your income is above £21,000 per annum, and if you progress on to Higher Education from an Access course and achieve your degree, the loan is written off, regardless of how much you go on to earn.

For more information on the Advanced Learner Loan, please visit gov.uk/advanced-learner-loan/overview.



The Advanced Learner Loan is designed to support people aged 19 or above with the cost of their tuition fees on Level 3 to Level 6 courses



Additional help

Students on a low income can apply for income support, while students with children or dependent adults may be eligible for a Childcare Grant, Parents' Learning Allowance, Adult Dependents' Grant or Child Tax Credit. Students with a disability, long-term health condition or specific learning difficulty (such as dyslexia) can apply for a Disabled Students' Allowance.

You may be eligible for these awards:

19+ Study Award

The Study Award provides support towards the costs of attending college. You could be eligible if your household income is £21,000 or less.

Travel Award

The Travel Award is to help with the costs of travelling to college. It's available to students who live more than 3 miles away from their college. Full-time students who are 19-25 years old and have a statement of Special Educational Need (SEN) can also apply to their council for Transport Support.

20+ Childcare Award

The Childcare Award is to help people with the costs of their childcare while at college. Like the 19+ Study Award, you are eligible if you have a household income of £21,000 or less.





HELP AND SUPPORT

We want to ensure you have the best possible experience with us. Our dedicated team is here to assist you in selecting the right programme, and help you settle in and make the most of your time at the College.

Admissions

If you decide to apply directly to the College for your Higher Education course, we will make the process of joining us as easy as possible. Once you've applied, we'll consider your application and arrange for you to come to the College so you

can find out more about what we offer. If you're undecided about the course you want to study, our expert Guidance and Support Officers can give you advice on the best route for your chosen career.

You'll have an informal interview with a member of staff in the relevant department who will look at your existing qualifications, talk to you about your ambitions, and ensure that you enrol on the right course for you.

We will then confirm the outcome of the interview in writing and keep in contact with you as you prepare to join the College.

Advice and guidance

Our friendly and experienced Student Support staff are always on hand to offer advice about courses, careers and any issues you need help with. This could include fees and finance, housing or personal problems that might prevent you getting the most out of your experience.

“

**We want to make
enrolling with us
as easy as possible
for you**

”

Learning support

Higher Education courses require a range of study skills, some of which may be new to you, so we offer learning support to help you succeed on your chosen course. You are welcome to come to our Learning Support and Resource Centre on campus where our team will be able to help you in areas such as:

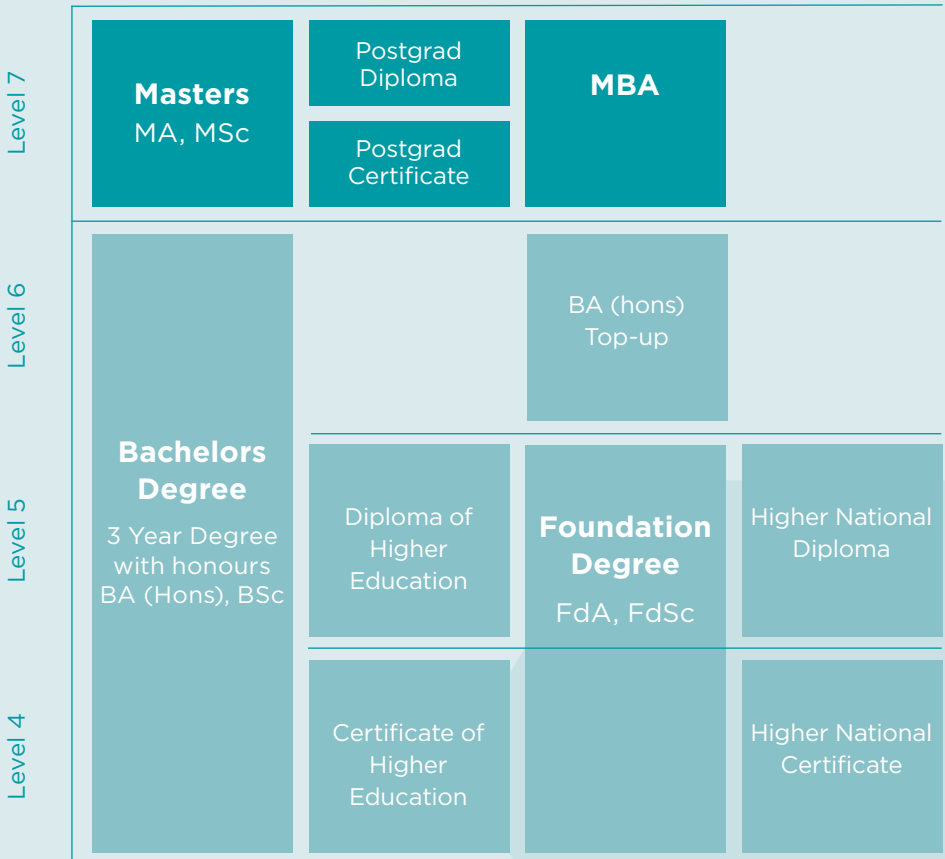
- > Essay writing
- > Referencing styles
- > Revision techniques
- > Research skills

We also offer one-to-one and small group support for learners with disabilities or additional needs, and those with dyslexia.



ABOUT OUR HIGHER EDUCATION QUALIFICATIONS

This is how Higher Education courses are structured.



HOW TO APPLY

APPLY DIRECT TO THE COLLEGE

Apply online at LSCollege.ac.uk or by completing an application form which you can obtain by calling us on 020 3757 3000

We will respond by email to let you know if we can offer you a conditional or unconditional offer. You may also be invited to an interview or audition, depending on the course you've chosen. (If we do not believe the course you've chosen is right for you at this point, our Guidance and Support Officers will be happy to help you)

You will confirm whether you'd like to accept our offer

You can now apply for your student loan at gov.uk/apply-online-for-student-finance

On results day (for A Levels, BTECs or other qualifications), provided you have met the minimum entry requirements, your conditional offer will become a firm offer

Lewisham Southwark College will then contact you to invite you for any initial assessments required for your course. Subject to achieving the required level in our assessments you will be given an enrolment date

At enrolment you will show your evidence of qualifications, meet your tutors and pay your fees (if you are not taking out a student loan). You will collect your College ID pass and be notified of your start day

APPLY VIA UCAS

Complete and submit your application at ucas.com, including supporting documents required, such as a personal statement, by 15th January 2018 (you can still make a late application after that date)

You will receive responses from the universities/colleges you apply for (which could be a conditional or unconditional offer, invitation to interview or rejection). You may also be invited to an interview or audition, depending on the course you've chosen

You will confirm your 'firm' and 'insurance' choices by the date UCAS give you

You can now apply for your student loan at gov.uk/apply-online-for-student-finance

On results day (for A Levels, BTECs or other qualifications), provided you have met the minimum entry requirements, your conditional offer will become a firm offer

Lewisham Southwark College will then contact you to invite you for any initial assessments required for your course. Subject to achieving the required level in our assessments you will be given an enrolment date

At enrolment you will show your evidence of qualifications, meet your tutors and pay your fees (if you are not taking out a student loan). You will collect your College ID pass and be notified of your start day

HNC (Higher National Certificate) in Performing Arts (Dance)

This course aims to provide dance training at an advanced level, preparing you to apply to leading dance schools, conservatoires and degree courses, or to enter the dance industry.

The programme is designed for people who already have a Level 3 qualification and are looking for a further year of intensive dance training. It offers daily training in classical ballet, contemporary, and jazz technique.

You will also develop your leadership skills through units such as Dance in Education, your creative skills through improvisation and choreography units, and your analytical skills through the study of a range of practitioners and their work.

You will study in our £41m Southwark campus, which includes state-of-the-art dance studios, and get the opportunity to tour and perform in a variety of local venues.

You will study a range of topics including units in Creative Arts Professional Practice, Creative Arts Research Skills, Classical

Ballet Background and Technique, Contemporary Dance Technique, Dance Practices in the Community, Jazz Dance Technique and Performance, Managing a Creative Business, and Marketing the Creative Arts.

You will be continually assessed throughout the year through a range of methods. This will include assessments on your technique, performances, choreographic work, research and essay writing, evaluations and reflective logbooks, video diaries, and presentations.

Progression and careers options

Successful graduates can progress on to the first, second or third year of a University degree, or vocational dance college.

The course also prepares graduates for industry auditions and work. A high proportion of our former students have gone on to have very successful careers in dance – either directly after completing the course or after further training – as performers, choreographers, youth dance leaders, dance teachers/lecturers or artistic directors.

Award	Duration	Fees
HNC	1 year	£6,165

You can apply directly to the College via an online application (LSCollege.ac.uk) or through UCAS (ucas.com).

Typical entry requirements

- Four GCSEs at grades A*-C (9-4)
- You will also need to take an initial assessment to demonstrate an appropriate level of maths and English
- Audition
- GCSE English and Maths at level 4 or above
- A full Level 3 qualification
- 60 UCAS points



Foundation Degree in Art and Design *

This innovative programme will prepare you for graduate level opportunities in the growing fashion, media and arts industries across London and beyond.

On this course you will 'own' your learning journey, and develop as an independent learner. As well as focusing on a distinct creative pathway (fashion design, illustration, fine art or digital media design) you will develop a range of important study skills such as self-reflection and research. You will work on live projects which will enable you to develop employment-based skills such as project management, networking and event planning.

You'll learn at our £41m state-of-the-art Southwark campus which offers an innovative learning environment and specialised art and design studios.

The units you will study include: Critical and Contextual Studies, Studio Practice: process and production, Studio Practice: strategies and methodology, Developing Creative Professional Practice.

- Pathway Specialisms: Fine Art Studio Practice, Digital Media Studio Practice, Tailoring Project, Experimental Materials and Sustainable Fashion
- Core Pathway Modules in Work-Based Learning
- You will also undertake a Final Major Project

Progression and careers options

You can choose to 'top up' this qualification to gain a full Honours degree, or you may decide to go directly into employment. The course will equip you to work in a graduate-level role within the creative industries.

Award	Duration	Fees
Foundation degree	2 years	£6,165 a year **

You can apply directly to the College via an online application (LSCollege.ac.uk) or through UCAS (ucas.com).

** Subject to validation*

*** Fees for the subsequent year of degree courses may be subject to change*



Typical entry requirements

- Level 3 qualification at Certificate or Diploma level
- GCSEs at grade A*-C (9-4) in maths and English language



Foundation Degree in Music and Production *

This programme offers a unique opportunity to develop specialist skills while engaging with a broad range of music practices, equipping producers and musicians for the complexities of early 21st century music production.

The programme provides students with a range of history, culture and theory modules that enable students to contextualise their music production skills and develop essential skills in writing and analysis. Throughout the course, students are encouraged to develop both their individual creativity and capacity to work in a range of collaborative situations.

Based at our £41m Southwark campus, students on this programme benefit from our state-of-the-art recording, rehearsal, workstation and IT facilities, and get many chances to perform at external venues. There are also plenty of opportunities for trips and visits to concerts, backstage events and music industry businesses.

On this course you will learn and develop a wide range of production

skills, develop performance skills to a professional standard, learn how to work collaboratively with other musicians and producers, and formulate a practical career development plan. Among other topics you will study contemporary music production and performance practices, computer music production techniques, producing music for the moving image, and integrating live instrumentation with electronic sound. You'll also gain a detailed knowledge of music genre, technology, digitisation and global music culture, and a solid knowledge of the way the music industry works.

Progression and careers options

Successful completion of this qualification leads to automatic progression to L6 of either the BA (Hons) in Popular Music or the BSc (Hons) in Music Technology at University of East London. This Foundation Degree is awarded by the University of East London.

The course is aimed at equipping you for a career in the music industry as a performer, business person or engineer.



Award	Duration	Fees
Foundation degree	2 years	£6,165 a year **

You can apply directly to the College via an online application (LSCollege.ac.uk) or through UCAS (ucas.com).

* *Subject to validation*

** *Fees for the subsequent year of degree courses may be subject to change*

Typical entry requirements

- 60-70 UCAS points
- Each applicant will have an audition and an interview
- Applicants who have relevant industry experience or can demonstrate aptitude, ability and interest, may also be considered



Foundation Degree in Business Management *

This innovative course aims to enable students to develop a sound knowledge and understanding of organisations and the business environment, while developing the skills and techniques which will enable them to succeed in business.

The programme will allow you to explore the functions of business (finance, human resources, leadership, marketing and management) and gain a broader understanding of how key institutions and national and world markets operate. As part of the course you'll get the opportunity to work on live briefs set by industry and may act as a business consultant recommending solutions to local businesses.

You'll learn at our £41m state-of-the-art Southwark campus which offers an innovative learning environment and specialised facilities. These include classrooms and workspaces equipped with the latest IT, and a well-resourced Learning Centre.

Some of the core units you will study include Management and Globalisation, Principles of Leadership, Contemporary Issues in Business, and Management Information Systems.

You can also choose to enhance your career prospects by securing a voluntary work placement.

Progression and careers options

After successful completion of the course, you may choose to progress on to our BA (Hons) Business Management 'top-up' degree, or go directly into employment. The course will prepare you for a career in management in almost any business or industry, or to pursue your own enterprise.

Award	Duration	Fees
Foundation degree	2 years	£6,165 a year **

You can apply directly to the College via an online application (LSCollege.ac.uk) or through UCAS (ucas.com).

** Subject to validation*

*** Fees for the subsequent year of degree courses may be subject to change*

Typical entry requirements

- > 70-80 UCAS points
- > GCSE in English and maths at grade A*-C (9-4)
- > Mature students (aged 21 or over) with relevant industry experience may also be considered



Foundation Degree in Business Information Technology *

This course is designed to give you the key skills you will need in the workplace, providing you with a nationally recognised qualification which will help you find your first position in the thriving IT sector.

Covering a wide range of topics, the course combines academic and practical study, giving you an integrated learning experience which reflects the needs of today’s computing industry. You will learn the theory, technology, practice and application of computing and the development of information systems, and gain awareness of the social, legal, ethical and political implications of IT within a computing environment.

You’ll learn at our £41m state-of-the-art Southwark campus which offers an innovative learning environment and specialised facilities, including IT laboratories equipped with the latest technology.

This course will help you to find work in a new career within IT, or enable you to update and add to your employment skills in order to progress in your current field.

Progression and careers options

You can ‘top up’ to a BSc Hons Business Information Technology at the University of Greenwich (subject to passing the course, meeting the University’s entry requirements and availability of places), or choose to go directly into employment. The course can lead to a career as a business analyst, systems designer, database developer, database administrator or website developer. It also provides opportunities for roles in information systems security, IT management and network service administration.

Award	Duration	Fees
Foundation degree	2 years	£6,165 a year **

You can apply directly to the College via an online application (LSCollege.ac.uk) or through UCAS (ucas.com).

** Subject to validation*

*** Fees for the subsequent year of degree courses may be subject to change*

Typical entry requirements

- GCSE English and maths at grade A*-C (9-4)
- Education to A level standard



HNC (Higher National Certificate) in Business

This course enables you to develop strong, business-focused practical skills alongside the knowledge you need for a successful career in a range of interesting sectors.

This is a specialist, vocational programme which will suit people who have completed Edexcel BTEC Higher Nationals L4. Linked to professional body and National Occupational Standards, the course is taught at our £41m Southwark campus where you will benefit from an innovative learning environment and state-of-the-art computer suites.

The programme provides a thorough grounding in the key concepts and practical skills required in the business, accounting and law sectors and - since it is nationally recognised by employers - allows direct progression to employment. The course aims to equip students to work in a range of careers including management, administration, HR, marketing, accounting and law.

This HNC provides a general qualification which allows flexibility to specialise in your area of interest, with career progression and professional recognition in mind.

Some of the units you can study include Organisational Behaviour, Consumer Behaviour and Insight, and Customer Value Management. You will also get the chance to undertake a research project as an integral part of the course.

You will be assessed through a range of methods including portfolios, exams and practical work.

Progression and careers options

Having successfully completed this course you can progress on to the second or third year of a degree or Honours degree programme, or to a professional qualification offered in the business sector. The course opens up a wide range of careers in management administration, HR, marketing, accounting, and law.

Award	Duration	Fees
HNC	2 years	£6,165 a year *

You can apply directly to the College via an online application (LSCollege.ac.uk) or through UCAS (ucas.com).

** Fees for the subsequent year of degree courses may be subject to change*



Typical entry requirements

- GCSE English and maths at grades
- A*-C (9-4) plus a substantial Level 3 qualification in a related subject which adds up to 180 UCAS points



HND (Higher National Diploma) in Business *

This course enables you to develop strong, business-focused practical skills alongside the knowledge you need for a successful career in a range of interesting sectors.

This is a specialist, vocational programme which will suit people who have completed Edexcel BTEC Higher Nationals L4. Linked to professional body and National Occupational Standards, the course is taught at our £41m Southwark campus where you will benefit from an innovative learning environment and state-of-the-art computer suites.

The programme provides a thorough grounding in the key concepts and practical skills required in the business, accounting and law sectors and - since it is nationally recognised by employers - allows direct progression to employment. The course aims to equip students to work in a range of careers including management, administration, HR, marketing, accounting and law.

The HND provides a general qualification which allows flexibility of study to specialise in your area of interest, with career progression and professional recognition in mind.

Some of the units you can study include Business Decision Making, Business Strategy, Working With and Leading People, Marketing Planning, Sales Planning and Operations, Small Scale Enterprise, Personal and Professional Development, and Human Resource Development. You will also get the chance to undertake a research project during the course.

You will be assessed through a range of methods including portfolios, exams and practical work.

Progression and careers options

Having successfully completed this course you can progress on to the second or third year of a degree or Honours degree programme, or to a professional qualification offered in the business sector. The course opens up a wide range of careers in management, administration, HR, marketing, accounting and law.

Award		Fees
HND	1 year	£6,165 a year

You can apply directly to the College via an online application (LSCollege.ac.uk) or through UCAS (ucas.com).

** Subject to validation*

Typical entry requirements

- A substantial Level 4 qualification in a related subject
- L4 HNC with a total of 120 credits
- GCSEs at grade A*-C (9-4) in maths and English language



MBA (Masters of Business Administration)

Our MBA is a stimulating and challenging programme which will make you question and re-evaluate how you do business.

The challenges of the 21st century require leaders and managers who can adapt to rapidly changing environments, understand complex situations, find innovative solutions to problems and then lead their organisations forward.

This course will enable you to develop a systematic understanding and critical awareness of current leadership and management issues and will provide the opportunity for you to explore your individual development as a leader and manager.

You will learn at our £41m state-of-the-art Southwark campus which offers an innovative learning environment and specialised facilities.

Designed in consultation with local and national employers to meet current industry and management requirements, the course is designed to shape and guide you as a reflective, open-thinking, adaptive learner.

This is facilitated through enhanced understanding of the interplay of theory and practice in management, and opportunities to work on real projects for a range of large and small organisations.

Progression and careers options

After successful completion of the course you may choose to progress on to further study through either a PhD or Doctorate within a business discipline, or to return to employment at a higher level.

The advanced skills and knowledge you will gain on our MBA will enable you to improve your employment prospects, whether you want to change fields, move into consultancy, or progress to a higher level within your current business sector.

Award	Duration	Fees
MBA	18 months	£8,250

You can apply directly to the College via an online application (LSCollege.ac.uk).

Typical entry requirements

Usually an Honours degree or equivalent from a recognised institution, and a minimum of two years' graduate-level work experience.



MA (Master of Arts) in Business Management

This course will enable you to enhance your knowledge and understanding in the field of business management, equipping you for a successful career at managerial level within a range of sectors.

On this course you will explore many different aspects of business including the factors that drive firms to develop and grow, and the tools they use to market their products and services. You will also explore some of the key challenges faced in the business world today: managing people effectively, successful leadership, and promoting an organisation's ethical standards and social responsibility.

The programme adds value to your existing business qualifications by allowing you to acquire an integrated and strategic view of management within organisations in a rapidly changing world of business. It will give you an appreciation of the complexities of the contemporary business environment, and the skills needed to navigate it successfully.

You will study a range of units including Marketing – Strategy and Planning, Management of HR and Corporate Social Responsibility and Business

Ethics, and Strategic Management. You will also complete a Dissertation and a Work-Related Project.

The course is taught through a dynamic mix of methods including lectures, tutorials, collaborative student-led seminars and presentations, workshops, enquiry based approaches (such as case study scenario/critical incident analysis) and simulated experience (such as workshops and discussions). You will be taught by staff with recent industrial experience in the retail, finance and law sectors, and benefit from external guest speakers.

You will also have the opportunity to undertake exciting work placements with international companies as well as independent accounting and law firms, and local government organisations.

You will be assessed throughout the course through coursework, essays, assignments, reports, presentations, case study presentations and reflective journals.

The course is based at our £41m state-of-the-art Southwark campus which offers an innovative learning environment and specialised facilities.

Progression and careers options

Having successfully completed the course you may choose to progress to a PhD or Doctorate within a business discipline. Alternatively, the transferable skills you will have gained open up a wide range of career opportunities in business, administration and management careers, both in the public and private sectors.

Award	Duration	Fees
MA	18 months	£5,250

You can apply directly to the College via an online application (LSCollege.ac.uk).

Typical entry requirements

- Honours degree or equivalent from a recognised institution
- Satisfactory performance in assessment task (usually a written essay on a given topic)
- Applicants for whom English is not their first language need a minimum IELTS score of 6.0, or a nationally recognised equivalent.



FdSc (Foundation Degree Sciences) Cyber Security *

This course is designed for people who are fascinated by security and the challenge of protecting our digitally-stored information - one of the biggest issues we face as a society today.

The course is designed to enable students to gain technical and professional skills which will enable them to work in the rapidly growing cyber security industry. You will gain an understanding of ethical hacking and penetration testing for computer systems, prevention of attacks (including the creation of a risk management strategy and disaster recovery planning), securing personal and business systems, and cyber security programming.

You'll learn at our £41m state-of-the-art Southwark campus which offers an innovative learning environment and specialised facilities, including IT laboratories equipped with the latest technology.

You will study a range of units including Behavioural Analytics and Data Security, Server Administration and Compliance, Cyber Security Programming, Disaster Recovery Planning and Systems and Server Investigation.

You'll also be encouraged to undertake work placements and manage live projects from industry, giving you valuable work experience to help you to secure employment when you graduate.

You will learn via written practical assignments, work-based projects, presentations, peer work and independent study. Assessment is carried out through in-course technical reports, presentations, case studies, peer assessments, work-based projects and time-constrained assessments.

Progression and careers options

You will be able to progress on to further study (such as a top-up degree) or go directly into employment. The course opens up career opportunities in security and digital forensics with commercial companies and law enforcement agencies (such as the police, military and government intelligence agencies, and private security and consulting companies).



Award	Duration	Fees
Foundation degree	2 years	£6,165 a year **

You can apply directly to the College via an online application (LSCollege.ac.uk) or through UCAS (ucas.com).

** Subject to validation*

*** Fees for the subsequent year of degree courses may be subject to change*

Typical entry requirements

- 70-80 UCAS points, preferably from an ICE A Level/Level 3 vocational qualification such as the Edexcel Extended Diploma
- GCSE English and maths at grade A*-C (9-4)
- Mature students with relevant industry experience may also be considered



FdSc (Foundation Degree Sciences) Network and Security Technologies *

This course is designed for people who are fascinated by the internet and the latest communication technologies, and will provide you with the technical and professional skills you need to work in the networking and security industries.

On this course you will learn the principles of network infrastructure; how information is transferred securely through voice over IP, video calling and mobile phone data; and how to create functioning networks. You will develop skills that will enable you to build and configure enterprise networks, including network security and virtualisation. Cisco Certified Network Associate industry qualifications are also embedded in this course.

You'll learn at our £41m state-of-the-art Southwark campus which offers an innovative learning environment and specialised facilities, including IT laboratories equipped with the latest technology.

You will study a range of units including LAN Server Administration and Virtualization, Network and Computer Systems, Cloud Computing, Cyber Security and Scaling Networks.

You'll be encouraged to undertake work placements and manage live projects from industry, giving you valuable work experience to help you to secure employment when you graduate.

You will learn via written practical assignments, work-based projects, presentations, peer work and independent study. Assessment is carried out through in-course technical reports, presentations, case studies, peer assessments, work-based projects and time-constrained assessments.



Progression and careers options

You will be able to progress on to further study (such as a top-up degree) or go directly into employment in the network and communications industry, where you could become a network engineer, network architect, technician, security analyst or server administrator.

Typical entry requirements

- 60-70 UCAS points, preferably from a computing programme
- GCSE English, maths and science at grade A*-C (9-4)
- Mature students with relevant industry experience may also be considered

Award	Duration	Fees
Foundation degree	2 year	£6,165 a year **

You can apply directly to the College via an online application (LSCollege.ac.uk) or through UCAS (ucas.com).

* *Subject to validation*

** *Fees for the subsequent year of degree courses may be subject to change*

Foundation Degree in Children and Young People *

This course is designed to give you the knowledge, skills and experience you need to work within an early years or play work setting, or as a teaching assistant.

Developed in collaboration with professionals working in the sector, the course is industry relevant and reflects the latest research and thinking. It prepares students to work with children and young people, in roles within early years and play work settings, or as a teaching assistant.

You will study a range of units such as Child Development, Equality and Diversity in Practice, The Curriculum Early Years, Atypical Development, and Safeguarding.

Students must already be in a paid or voluntary placement in a childcare related setting, which will enable them to apply what they learn in a real working environment within their chosen setting.

You will study at our £41m state-of-the-art Southwark campus, which offers an innovative learning environment and specialised facilities. You will learn through a dynamic mix of lectures, tutorials, seminars, group work, reflective accounts and research.

You will be assessed through research projects, presentations, exams, and assignments such as a personal development portfolio collated using examples from your work placement.

Progression and careers options

You will be able to progress on to further study (such as a top-up degree) or directly into employment in roles such as a nursery nurse, family support worker or teaching assistant within primary and secondary education, as well as to positions in voluntary, statutory and private services for children and young people.

Award	Duration	Fees
Foundation degree	2 years	£6,165 a year **

You can apply directly to the College via an online application (LSCollege.ac.uk) or through UCAS (ucas.com).

* *Subject to validation*

** *Fees for the subsequent year of degree courses may be subject to change*



Typical entry requirements

- 70-80 UCAS points
- GCSE English and maths at grade A*-C (9-4)

Foundation Degree in Early Years *

This course aims to meet the needs of staff employed in children’s services, combining university-level study with work based learning to enable you to advance your career prospects.

The programme is designed to enable Early Years practitioners and educators to build on the knowledge and experience they have developed in their existing employment and raise their level of professional qualification to Foundation Degree level through both practical application and academic study. It offers you a route into Higher Education without the need to leave paid employment and be removed from current issues and responsibilities.

You will study a range of units including Working in Multi Agency Teams, Children and Families, Development through Play, and Safeguarding Children’s Welfare. You will also undertake an Impact Action Research Project.

You will learn at our £41m Southwark campus, and have the opportunity to attend Early Years conferences and exhibitions. You will be assessed through a range of methods

including verbal presentations, essays, reports, projects, posters, group presentations, role play, and electronic and reflective portfolios of practice.

Progression and careers options

Having successfully completed the course you can progress to a BA (Hons) degree or Early Years Teachers Status (EYTS). You can also progress to a PGCE in Education to enable you to teach in schools or colleges, or to MA level study.

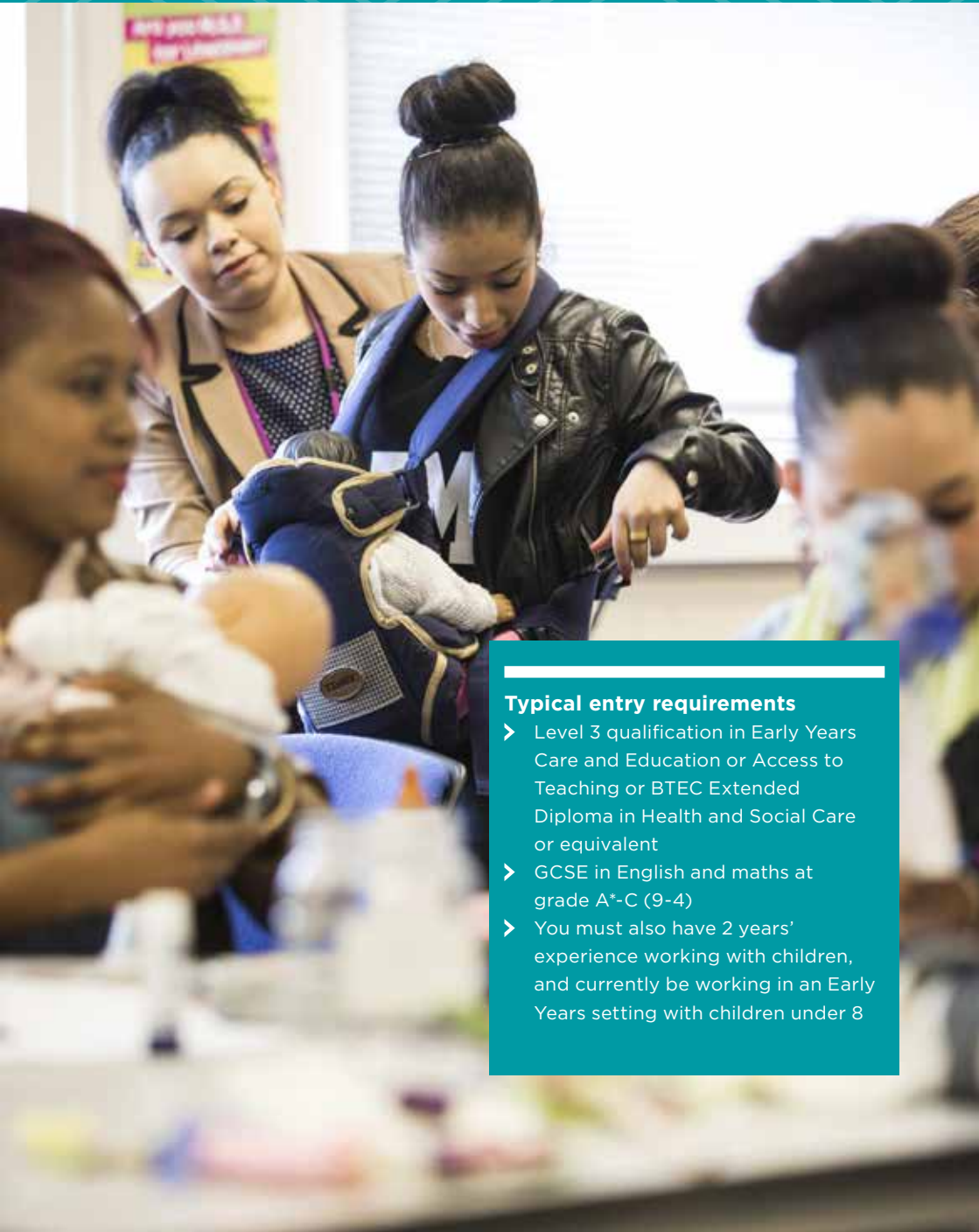
The course opens up career opportunities in a wide range of areas including play therapy, management of settings (family centres, full day care etc), Ofsted Inspection team work, development of practice through Action Research, Early Years educational consultancy and research work in other European countries and further afield.

Award	Duration	Fees
Foundation degree	2 years	£6,165 a year **

You can apply directly to the College via an online application (LSCollege.ac.uk) or through UCAS (ucas.com).

** Subject to validation*

*** Fees for the subsequent year of degree courses may be subject to change*



Typical entry requirements

- Level 3 qualification in Early Years Care and Education or Access to Teaching or BTEC Extended Diploma in Health and Social Care or equivalent
- GCSE in English and maths at grade A*-C (9-4)
- You must also have 2 years' experience working with children, and currently be working in an Early Years setting with children under 8

Foundation Degree in Health and Social Care *

Designed for people wanting to pursue a career in the health and social care sector, this course gives you the knowledge, skills and experience you will need to work with children, young people, adults and the elderly.

On this programme, you will be taught at our £41m state-of-the-art Southwark campus where you'll benefit from an innovative learning environment and specialised facilities.

The modules you will study provide a thorough grounding in community, health and education issues as well as helping you to develop skills in social policies and modern social issues. This will include modules in Equality and Diversity in Practice, and Working with Individuals, Organisations and Groups in Year One, and Critical Perspectives of Mental Health, Disability and Activities of Living, and Safeguarding in Year Two.

You'll learn through a dynamic mix of lectures, tutorials, seminars, group work, reflective accounts and research, and be expected to devote approximately 12 hours per

week to independent study. You will be assessed through essays, research projects, presentations and assignments.

Progression and careers options

Having successfully completed the course you will be able to progress on to further study or go directly into employment.

Graduates can go on to work in a wide range of roles in the sector, including as drug and alcohol counsellors, family support workers, care workers and roles within the NHS, charitable organisations (MIND, NSPCC, Age UK etc), social care organisations and primary education/childcare. Other roles, such as social work, nursing or occupational therapy, require additional professional qualifications and further study.

Award	Duration	Fees
Foundation degree	2 years	£6,165 a year **

You can apply directly to the College via an online application (lscollge.ac.uk) or through UCAS (ucas.com).

** Subject to validation*

*** Fees for the subsequent year of degree courses may be subject to change*



Typical entry requirements

- 70-80 UCAS points, preferably within the area of health and social care
- GCSEs at grade A*-C (9-4) in maths and English language



Teaching courses at LS College

Few jobs are as rewarding as teaching and supporting learning, and a qualification in this field can open up many different career options.

Whether you want to work in Early Years, Primary, Secondary or with adults, we have a programme that will help you achieve your career goals.

We offer courses at a wide range of levels, enabling you to choose the right programme for you, whatever your current level of qualification.

All of our teaching courses are based at our Southwark campus.



Which programme should I choose?

Your current situation and goals	Course options
I want to teach Early Years (children aged under 5), Primary (5 to 11 years) or Secondary (11 to 18 years), and have GCSEs (at grade A*-C or 4-9) in English, Maths and (preferably) Science.	<ul style="list-style-type: none"> ➤ L3 Access to HE Diploma: Education and Teacher Training
I'd like to work in a role supporting learning in schools, or I already work in this type of role.	<ul style="list-style-type: none"> ➤ L2 Award in Support Work in Schools and Colleges ➤ L2 Certificate in Supporting Teaching and Learning ➤ L3 Award, Certificate or Diploma in Supporting Teaching and Learning
I'm looking to change careers and am interested in teaching adult education, or I'm already working in a role which includes a training element.	<ul style="list-style-type: none"> ➤ L3 Award in Education and Training (short course)
I'm teaching and want to gain a professional qualification, or I'd like to teach in Further Education colleges, adult and community learning, 14-19yr. old units in schools and academies, public and private training organisations, prison education or the public services (police, paramedics, fire service).	<ul style="list-style-type: none"> ➤ L5 Diploma in Education and Training (including L6 Professional Graduate Certificate in Education and Training, for graduates) ➤ L4 Certificate in Education and Training ➤ L4 Award in Education and Training
I'm a qualified teacher working in Maths (numeracy) or English (literacy or ESOL) and would like to further develop my specialist teaching skills.	<ul style="list-style-type: none"> ➤ Level 5 University Diploma in Teaching Maths ➤ Level 5 University Diploma in Teaching English

You can explore our wide range of teaching qualifications in the following pages. If you'd like to find out more about these courses, get in touch with us on **020 3757 3400**

Diploma in Teaching English

This course is designed to develop you as a professional English/literacy/ESOL teacher by broadening and enhancing your existing specialist knowledge and understanding, skills-base and practice.

This part-time, one-year, in-service evening course offers a professional opportunity to further develop the skills and knowledge required to teach English/literacy/ESOL across a range of settings. These include Further Education colleges, adult and community learning, 14-19 units in school and academies, public and private training organisations and prison education.

On the course you will study three mandatory modules: English: ESOL, Literacy and Learners; Theories and Frameworks; and Learning and Teaching.

You will learn through a lively mix of methods including classroom-based teaching, seminars, tutorials, workshops, independent research and study.

You will also have access to our VLE site, Blackboard, which will provide you with a range of materials and resources to support your learning whilst on this course. Both individual tutorial support and additional learning support are also available, if required.

Assessment is via a portfolio of evidence which will include written assignments, presentations, peer observations, teaching observations and reflective logs. There is no final examination.

This qualification is awarded by Canterbury Christ Church University (CCCU).

Progression and careers options

Successful completion of this course can lead to permanent employment and/or promotion within the teaching or training profession.

Award	Duration	Fees
CCCU Diploma	1 year	£2,700

You can apply directly to the College via an online application (LSCollege.ac.uk).



Typical entry requirements

- An initial teaching qualification (eg PGCE, Certificate of Education or DTTLs)
 - A minimum of 50 hours' teaching in the specialist area at two distinct levels (including Entry Level)
 - A subject mentor secured prior to starting the course
 - Effective communication and a good command of written and spoken English
- Successful completion of a specialist initial assessment in English
 - It is possible to take both the ESOL and English pathways. This option requires a minimum of 75 hours' teaching (50 hours in your major subject and 25 hours in your minor subject) at two distinct levels (including Entry Level)

Diploma in Teaching Maths

This course is designed to develop you as a professional mathematics (numeracy) teacher by broadening and enhancing your existing specialist knowledge and understanding, skills-base and practice.

This part-time, one-year, in-service evening course offers a professional opportunity to further develop the skills and knowledge required to teach maths across a range of settings. These include Further Education colleges, adult and community learning, 14-19 units in school and academies, public and private training organisations and prison education.

On the course you will study three mandatory modules: Numeracy and the Learners; Improving Numeracy Knowledge and Understanding; and Numeracy Learning and Teaching.

You will learn through a lively mix of methods including classroom-based teaching, seminars, tutorials, workshops, independent research and study. You will also have access to our VLE site, Blackboard, which will provide you with a range of materials and resources to support your learning whilst on this course. Both individual tutorial support and additional learning support are also available, if required.

Assessment is via a portfolio of evidence which will include written assignments, presentations, peer observations, teaching observations and reflective logs. There is no final examination.

This qualification is awarded by Canterbury Christ Church University (CCCU).



Progression and careers options

Successful completion of this course can lead to permanent employment and/or promotion within the teaching or training profession.

Award	Duration	Fees
CCCU Diploma	1 year	£2,700

You can apply directly to the College via an online application (LSCollege.ac.uk).

Typical entry requirements

- An initial teaching qualification (eg PGCE, Certificate of Education or DTTLs)
- A minimum of 50 hours' teaching in the specialist area at two distinct levels (including Entry Level)
- A subject mentor secured prior to starting the course
- Effective communication and a good command of written and spoken English
- Successful completion of a specialist initial assessment in mathematics

Education and Training courses

These courses are designed to develop you as a professional teacher/trainer by broadening and enhancing your existing professional knowledge and understanding, skills-base and practice.

Our Education and Training courses include a Level 5 Diploma, Level 4 Certificate and Level 4 Award, enabling you to choose the most appropriate course for you. The courses are awarded by Canterbury Christ Church University (CCCU).

Diploma in Education and Training

This part-time, two-year, in-service course is designed for teachers and trainers working in Further Education colleges, adult and community learning, 14-19 units in school and academies, public and private training organisations, prison education and the public services (police, paramedics, fire service).

The course offers a ProfGCE pathway in year 2 for graduates, and an opportunity for English and maths teachers to complete two modules in their specialist areas. A bursary is available to graduates who follow the English or maths pathway route, dependent on subjects taught and your degree class.

On this course you will study six modules: Introduction to Teaching and Learning; Enhanced Learning and Teaching; The Learner and Learner Progress; Reflecting on Practice; Innovating the Curriculum; and Developing Practice.

Certificate in Education and Training

This part-time, two-semester, in-service course aims to provide you with an insight into the roles, responsibilities and relationships within education and training, and to develop your knowledge and skills-base around planning and delivering an inclusive teaching session, including theories of learning and strategies for managing learning. The course is designed for teachers/trainers in further and/or adult and community education, and trainers in the public and private sectors.

You will study two modules: Introduction to Teaching and Learning; and Enhanced Learning and Teaching.

You can use this short course as credit if you later decide to join the Diploma/ProfGCE course.

Award in Education and Training

This part-time, one-semester course aims to provide you with an insight into the roles, responsibilities and relationships within education and training, and to develop your knowledge and skills-base around

planning and delivering inclusive teaching sessions. The course is designed for people interested in a teaching career in further and/or adult and community education, and trainers in the public and private sector. (You don't need to be in a teaching/training role to undertake this course).

The course consists of one module: Introduction to Teaching and Learning.

You can use this short course as credit if you later decide to join the Diploma/ProfGCE course.



Education and Training courses continued...

Assessment

Assessment on our Education and Training courses is via an online portfolio of evidence which may include written assignments, presentations, micro-teach, peer observations, teaching observations and reflective logs, depending on the course you take. There is no final examination.

Progression and career options

Successful completion of these courses can lead to permanent employment and/or promotion in the teaching or training profession, as well as increased responsibilities and further teaching opportunities.

Having completed the Certificate or Award in Education and Training you may choose to progress on to the Diploma in Education and Training (ProfGCE route).

Having completed the Diploma in Education and Training (ProfGCE route), you may choose to progress on to the Diploma in Teaching in either English or mathematics, or to a Top-up BA (Hons) Education and Professional Training. With this qualification you can also gain professional accreditation by applying for Qualified Teacher Learning and Skills (QTLS), provided you have Level 2 qualifications in English and mathematics.

Award	Duration	Fees
CCCU Diploma	2 years (part-time)	£2,700 per year **
CCCU Certificate	2 semesters	£1,540
CCCU Award	1 semester	£450

You can apply directly to the College via an online application (LSCollege.ac.uk).

*** Fees for the subsequent year of degree courses may be subject to change*



Typical entry requirements

For all courses:

- A subject and/or vocational qualification at Level 3 or above (or evidence of extensive industrial experience)
- Effective communication and a good command of written English
- Successful completion of initial written assessment

In addition, Diploma applicants will need:

- Evidence of degree to complete ProfGCE route
- A minimum of 100 hours' teaching practice
- A subject mentor secured prior to starting the course
- Successful completion of additional assessment for maths and English specialists who wish to follow the pathway route

Certificate applicants will need:

- A minimum of 30 hours' teaching practice
- A subject mentor secured prior to starting the course

Foundation Degree in Tourism and Hospitality Management *

This course will enable you to develop the operational and management skills you need to work in the exciting and ever-evolving global tourism and hospitality industry.

Working in tourism and hospitality opens up a world of career opportunities, enabling you to combine work with travelling, and to learn and interact with people from a wide variety of cultures and lifestyles around the globe. This course is designed to give you the practical, marketing and managerial skills required to work in this dynamic industry.

Aimed particularly at people who aspire to be supervisors or managers, the course will help you to develop your coaching and management skills, allowing you to become a more efficient and effective manager within the workplace.

The modules you will study include Contemporary Tourism and Hospitality, Customer Relations, Leadership and Management, and Sustainable Tourism.

You will benefit from the College's strong links with companies across the tourism and hospitality industry, and complete a substantial work placement with an organisation such as the Hilton and Marriot hotel groups, The Ritz restaurant, Merlin Entertainments or The Excel Centre. You will also engage in live research projects.

You will be supported by tutors with specialist experience in the sector and benefit from personalised lessons and small group seminars. Teaching is via a lively mix of lectures, seminars, practical sessions, workshops and guest speakers. Assessment methods include written assignments, case studies, presentations, portfolios, work based projects and practicals.

The course is based at our £41m state-of-the-art Southwark campus which offers an innovative learning environment and specialised facilities.

Progression and careers options

After successful completion of this course you may choose to progress on to a BA (Hons) Travel and Tourism Management or BA (Hons) Hospitality and Culinary Management, or go directly into employment. The course will prepare you for a career as a supervisor or manager in a range of sectors within the tourism and hospitality industry.

Award	Duration	Fees
Foundation degree	2 years	£6,165 per year **

You can apply directly to the College via an online application (LSCollege.ac.uk) or through UCAS (ucas.com).

* *Subject to validation*

** *Fees for the subsequent year of degree courses may be subject to change*



Typical entry requirements

- A Minimum of 64 UCAS points at A level, BTEC or similar qualification
- GCSE English and maths at grade A*-C (9-4)
- Mature students (aged 21 or over) with relevant industry experience may also be considered





“

It's the beginning of something really exciting, the next step in your future.

”



GET IN CONTACT

If you would like any advice or guidance about the College or our courses, please get in contact on the phone number or email below.

- If you need help or assistance with understanding the application process – we can help. You can call, email or visit our campus.
- Our advisers are also happy to provide information and / or guidance on our fees and the loans available to you.

info@LSCollege.ac.uk
LSCollege.ac.uk/Higher-Education
020 3757 3400

DISCLAIMER: Whilst every effort has been made to ensure that information in the College Guide is accurate and correct, we reserve the right to make changes to our courses and the services we offer. Latest information will be found on the website.

Lewisham Southwark College is committed to promoting and providing equal opportunities for all its staff and students.

* Courses subject to validation

LS COLLEGE

HIGHER EDUCATION

SOUTHWARK CAMPUS

25 The Cut,
London, SE1 8LF

Buses: 1, 4, 26, 45, 59, 63, 100,
155, 168, 171, 172, 176, 188, 381

Tube: Waterloo or Southwark

Rail: Waterloo or Waterloo East

info@LSCollege.ac.uk

LSCollege.ac.uk/Higher-Education

020 3757 3400