

LEWISHAM  
COLLEGE



[lewisham.ac.uk](http://lewisham.ac.uk)

A photograph of four diverse young people sitting outdoors on a blue bench. From left to right: a young man with short dark hair wearing a blue and white striped polo shirt under a white knit cardigan; a young woman with short dark hair wearing a black leather jacket over a blue and yellow patterned shirt and large yellow hoop earrings; a young woman with long brown hair tied back wearing a black leather jacket over a blue and white striped shirt; and a young man with glasses and a black cap partially visible on the right. They are all smiling and looking towards the right. The background is a blurred green hedge.

# UNLOCK YOUR POTENTIAL

Course Guide

**YOUR  
COLLEGE IN  
THE HEART  
OF YOUR  
COMMUNITY**



WELCOME

## Welcome to Lewisham College

**We are a college at the heart of the London Borough of Lewisham, enhancing the lives of those within and outside our locality every single day.**

As soon as you join us, you will be part of our safe, supportive and inclusive community, which provides the perfect setting for you to thrive in your studies.

We put our students at the heart of everything we do and we are proud of our reputation for providing a high-quality student experience alongside an industry-engaged approach to teaching with buildings that blend innovative learning spaces with social spaces for group work and collaboration.

We have a dedicated employability and careers team to support you throughout your time at Lewisham and our partnerships with employers, local community organisations and universities will give you the foundation you need to develop your confidence, knowledge and skills.

The world is evolving and we support our students to embrace that change. Today's employers are increasingly looking for individuals who can make a difference and at Lewisham College we aim to provide you with the best possible opportunities for your career and to achieve your future goals.

Your time at Lewisham College is likely to be one of the most important and exciting experiences of your life and we look forward to supporting your journey.





A blurred background image showing students in a classroom. A young man in the foreground wears a black baseball cap with a camouflage band and glasses, looking towards the right. A young woman is partially visible next to him, also looking right. The background shows a window with a view of trees.

---

# UNLOCK YOUR POTENTIAL

---

Lewisham College is a leading London further education college with a great reputation for producing knowledgeable, successful students with great employment potential. We offer an exciting range of work-focused courses and provide a friendly, supportive learning environment where talent is nurtured.

**Explore our courses or come to an Open Day to find out more about what we offer.**

---



**STUDYING AT LEWISHAM COLLEGE opens an exciting range of future pathways. From your first day we will encourage you to think about what you want to do next and support you to achieve your goals.**

For many students, college will be a platform to advance to a higher level qualification such as a degree course at university or a higher apprenticeship, or you may be keen to dive straight into the world of work and apply the knowledge and skills you gained at College in a job.

Whatever you go on to, throughout your course, you'll have the opportunity to attend careers fairs where you can meet employers,

higher education and apprenticeship providers and talk about where your course could take you.

Many of our students progress on to degree programmes at highly regarded universities or exciting roles, including apprenticeships in a wide range of industries.







# AT THE HEART OF YOUR COMMUNITY

---

**Lewisham College is a thriving, dynamic further education college based across two campuses, Lewisham Way and Deptford Bridge. We are also part of NCG Group, which is one of the leading providers of further education in the UK.**

We are here to help you to gain the qualifications, professional skills and confidence you need to achieve your career ambitions. At our Lewisham Way campus, we offer vocational courses in a wide range of fascinating subjects, from business to creative arts and beauty, whilst our large Deptford campus specialises in construction and engineering training.

Our courses are designed to prepare you for an exciting career in your chosen sector. Taught by tutors with industry experience, you will learn in commercial facilities such as our T'ien Beauty Salon, Phoenix Restaurant and industry standard construction workshops, drama theatre and production art studio.

## You will benefit from:

---

- » Visits and lectures from external businesses
  - » Hands-on experience on work placements
  - » Innovative online learning resources to ensure learning can be delivered remotely when required
  - » A friendly and supportive community
  - » Well-equipped facilities, including on-site eateries and Learning Resource Centre
  - » Excellent Student Support services.
-





# FIND US

## Lewisham Way Campus

Lewisham Way  
SE4 1UT

**Buses:** 21, 136, 321, 436

**DLR:** Lewisham or Elverson Road

**Rail:** St Johns, Lewisham,  
New Cross or Brockley

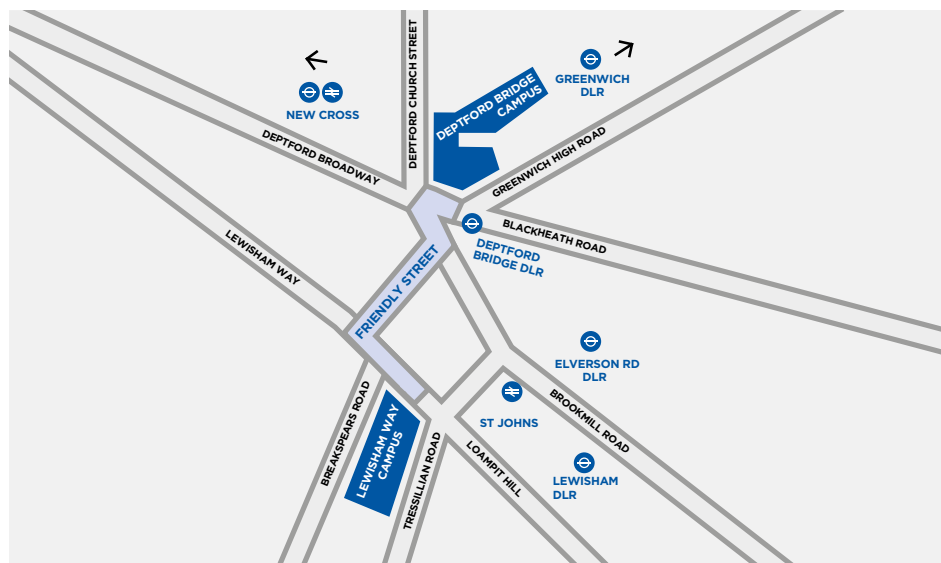
## Deptford Bridge Campus

2 Deptford Church Street  
SE8 4HH

**Buses:** 47, 53, 453, 177, 225

**DLR:** Deptford Bridge

**Rail:** Deptford or Greenwich





## OPEN EVENTS

**To find out more about the College, meet the teachers or speak with our Advice and Guidance team, come to one of our Open Day events.**

Our Open Days take place either on campus or online and are a great way to get a feel for college life and see our facilities.

**At both on campus and virtual Open Days you can:**

- » Hear from our students and teachers
- » Find out more about our courses
- » Hear about student life
- » Receive information about the support we offer

To register for an Open Day event, visit **[lewisham.ac.uk/opendays](https://lewisham.ac.uk/opendays)**

During Covid-19 we moved some of our events online. To watch our recordings or take a virtual tour through our campuses, visit **[lewisham.ac.uk/opendays](https://lewisham.ac.uk/opendays)**









## SUPPORT AT EVERY STEP

Coming to College can be daunting and you probably have lots of things on your mind. How much will it cost? Will I be able to keep up? What happens if I need extra support?

Lewisham College staff are available to help you at every stage of your journey.

## GETTING STARTED

If you're not sure what to study, we can help you decide on the best course for you and advise you on possible career paths. To arrange a session with one of our advisors, please contact us on **020 3757 3000**, **info@lewisham.ac.uk** or via the live chat service on our website at **www.lewisham.ac.uk**.





**[lewisham.ac.uk/studentsupport](https://lewisham.ac.uk/studentsupport)**

## SUPPORTING YOUR STUDIES

Our team are here to support and encourage you, providing quality advice and guidance for your future.

In our innovative Learning Centre, you will find lots of resources, computers and mobile devices and support in improving your ICT, research and presentation skills. You can also access online resources to enable remote learning.

If you require additional learning support to help improve your English and maths skills your teachers or the Additional Learning Support team can support you.

If you don't already have GCSEs in English and Maths at the level you need you can also study these alongside your chosen course. They can also support you if you need exam access arrangements or have a specific learning difficulty, dyslexia or a medical condition, such as one-to-one or small groups, to help you get the most out of your course.

## SUPPORT FOR **CARE LEAVERS**

Lewisham College is a partner of the Care Leaver Covenant, which helps to support care experienced students with their progression and next steps after college and an enhanced bursary per half term.

We understand the challenges that care experienced students face and although we may never know what happened in the young

person's life prior to college we aim to provide a sense of community and wellbeing to support them throughout their studies, with activities and workshops organised throughout the year as well as progression and exam support.

To find out more visit  
**[lewisham.ac.uk/careleavers](https://lewisham.ac.uk/careleavers)**



## SUPPORTING YOUR CAREER

We have industry links with hundreds of employers across London and can support you to find great work experience and volunteering opportunities as well as part-time work to enhance your CV and UCAS applications.

We encourage students to get involved in all aspects of College life.

We have an active Student Union and will be asking for nominations for the Student Union Executive, including a new President and Vice President. Each class will elect Course Representatives and they will be invited to discuss any concerns with college management teams on a regular basis. The Student Union will also work with you to help you organise student-run events and access a range of student benefits, including student discount.





## SUPPORTING YOUR WELLBEING

We have a dedicated team to help with welfare and safeguarding concerns and emergency situations.

You can access counselling support as well as one-off support and advice. If you have a diagnosed mental health concern we will do all we can to support you.

You can contact the Safeguarding Team by emailing **[safeguarding@lewisham.ac.uk](mailto:safeguarding@lewisham.ac.uk)**.

We can also support you if you are a looked after child, care leaver, being supported by the Youth Offending Service, a young parent or a young carer.



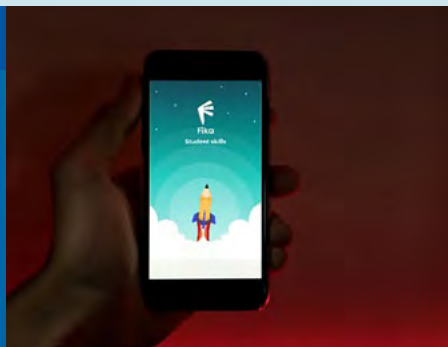
If you have an Education, Health and Care Plan (EHCP) we have a team of staff who will work with you and your family to discuss the support you may need to be successful in your studies. If you have any learning difficulties or disabilities or require exam access arrangements the team will discuss ways the College can support you. Read more about our Supported Learning courses on page 70.

### Fika Mental Fitness

**Lewisham College has partnered with Fika Mental Fitness to help combat the challenges of blended study and the mental health impact of the Covid-19 pandemic.**

The app offers a series of programmes created to help students learn from expert psychologists, other students, academics and professional athletes.

Students can use the app to access video, audio and text programmes covering many topics, including managing distractions and uncertainty, maintaining motivation and positivity, staying connected, selfcare and healthy habits.



It also helps to develop focus, confidence, motivation, connection, positivity, meaning and management of stress.

Find out more at **[lewisham.ac.uk/fika](https://www.lewisham.ac.uk/fika)**



**Lewisham College is proud to be part of NCG, one of the country's leading college groups.**

We are one of seven colleges across the country that make up NCG, meaning we're a key part of providing education and training to learners, apprentices and employers across the UK.

Together, we share expertise, support each other to grow, help each other to innovate and accomplish real change for individuals, communities and economies across the country.

### **Student benefits**

Students studying at any of our colleges benefit from the NCG Guarantee. This guarantee gives all our students access to a range of tools and initiatives centred around a core set of principles. Our courses, additional support services and enrichment activities will equip you with a wider set of skills, all of which aim to make you more employable.

**Put simply, the NCG Guarantee gives students access to additional activities, resources and initiatives to help you achieve your ambitions and career goals.**

**The NCG Guarantee is centred around a core set of principles:**

- » Employability
- » Community
- » Enterprise
- » Mental Fitness
- » Digital

Throughout your time with us you will be involved in a range of projects and initiatives focused on these principles. Coupled with excellent teaching and learning, you will complete your course with a unique set of skills which help set you up for your future.





# **LIFETIME SKILLS GUARANTEE:**

## **Free Level 3 courses for adults**

**The government launched this £95 million initiative to provide adults the opportunity to upskill and boost their career prospects or gain the necessary knowledge and skills to access new career opportunities.**

To be eligible for the scheme, adults must be 24 and over, reside in England, and not have a Level 3 qualification in any field.

### **Lifetime Skills Guarantee courses**

- » **AAT Advanced Diploma in Accounting**
- » **AAT Advanced Diploma in Accounting (Bookkeeping)**
- » **Better (GLL) Swimming Teacher Sector-Based Work Academy**
- » **Certificate in Counselling Skills**
- » **Certificate in Preparing to Work in Adult Social Care**
- » **Diploma in Advanced Professional Cookery**
- » **Diploma in Bricklaying**
- » **Diploma for the Early Years Workforce**
- » **Greggs Team Leader Sector-Based Work Academy**
- » **IHG Hotels & Resorts Sector-Based Work Academy**
- » **Step into Employment Programme**
- » **TfL 12-week Programme**

All courses are subject to availability, eligibility and accessibility needs. You will not be guaranteed a place on a course until you have fully enrolled and received your Learning Agreement.



# YOUR NEXT STEP

You can find out more information about all of our courses in this guide, on our website or by attending an open event. This includes:

- » Course information and career pathways for each area of learning
- » Opportunities for work experience, volunteering, enrichment and competitions linked to the subject you are interested in
- » Student support and additional qualifications available to enhance your CV and university applications

## 1. Explore our courses at [www.lewisham.ac.uk](http://www.lewisham.ac.uk)



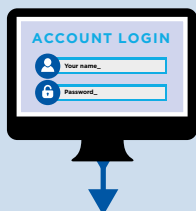
## 2. Not sure what to study? Contact us via email, phone, live chat or on campus



## 3. Click **APPLY NOW** at the top of the web page [www.lewisham.ac.uk](http://www.lewisham.ac.uk)



## 6. Create an account



## 5. Select the course you would like to apply for

- » **Early Years**
  - » Certificate in Multitrade Construction Activities (Level 1) Programme
  - » Certificate in Childcare (Children & Young Peoples Workforce)
  - » Diploma in Foundation Learning in Health and Childcare (Level 1) Programme

## 4. Search by name of course or subject area

- » **Construction**
  - » Certificate in Multitrade Construction Activities (Level 1) Programme
  - » Diploma in Bricklaying (Level 1) Programme
  - » Diploma in Bricklaying (Level 2) Programme



## 7. Complete the online application form



## 8. Let us know on the form if you need any additional support

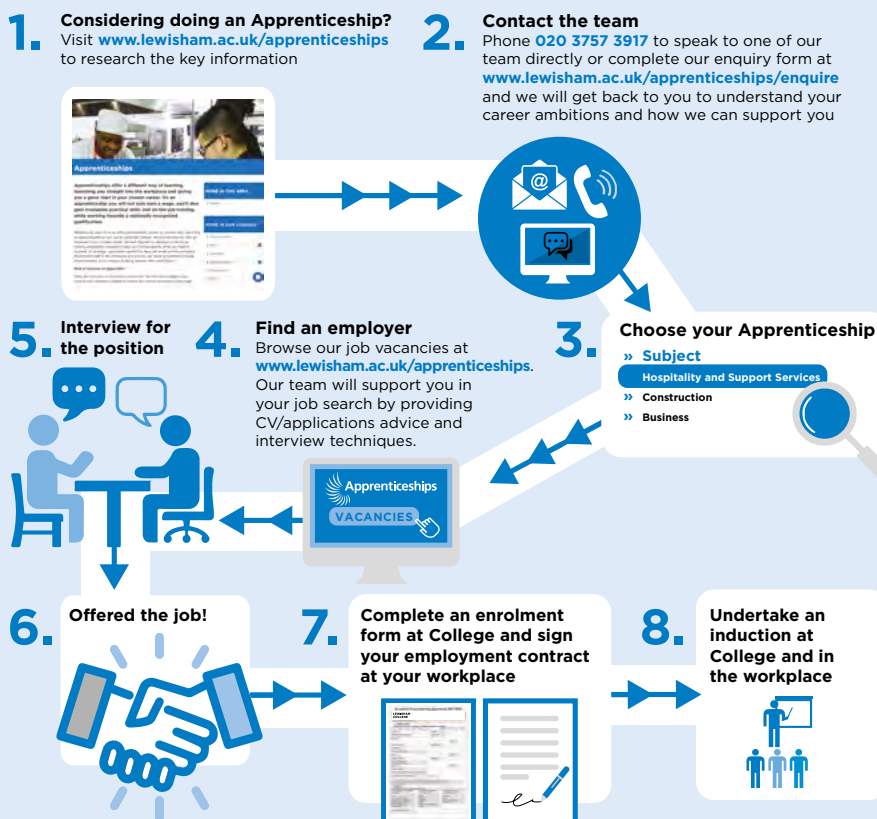


## 9. Submit your application

**SUBMIT**

Once you have applied you will receive confirmation and an invitation to the next stage of the process by email.

# Explore our courses at **lewisham.ac.uk**





# LEWISHAM COLLEGE EMPLOYABILITY

---

**Your career ambitions are important to us. From the first time you step inside the College, we will talk to you about what you'd like to do in the future and help you to plan the best route to get there.**

Our Guidance and Progression teams, who are located at both Lewisham Way and Deptford Bridge campuses, are on-hand to offer you a range of support to help you fulfil your career ambitions. You can get expert careers advice and guidance on writing a CV, job applications and interview techniques.

You can also hear about live job vacancies, including part-time job roles with our employer partners. Our supportive team will also work with you to ensure you have the additional skills and qualifications needed in the workplace and develop the knowledge needed to further your professional career.

**Get in touch with the team if you are a student and would like support with:**

---

- » Using job boards
  - » Finding work placements, internships and volunteering roles
  - » Improving your CV
  - » Writing engaging work and Higher Education applications
  - » Developing effective interview techniques.
-





**[lewisham.ac.uk/employability](https://lewisham.ac.uk/employability)**

As well as supporting 16-18-year-olds during their study programme, our Employability team also offers services for adults who are currently unemployed and looking for work, including employability courses that could help you to develop your skills and gain new qualifications.

## Employability courses

- » **Business Administration and Skills for Work**
- » **Support Work in Schools and Colleges**
- » **Functional Skills in English**
- » **Functional Skills in Maths**
- » **Intermediate IT**
- » **Film Security Work Academy**
- » **CSCS and Skills for Work**
- » **Team Leader Work Academy**
- » **AAT and Bookkeeping**
- » **Adult Care Work Academy**
- » **IT for Beginners**
- » **Civil Service Work Academy**
- » **CIS Door Supervision Work Academy**
- » **ESOL Pre-Entry**
- » **ESOL E1/E2**
- » **Basic Skills Pre-Entry English**
- » **Basic Skills English Entry Level 3**
- » **Hospitality Work Academy**
- » **Digital Skills**

All courses are subject to availability, eligibility and accessibility needs. You will not be guaranteed a place on a course until you have fully enrolled and received your Learning Agreement.

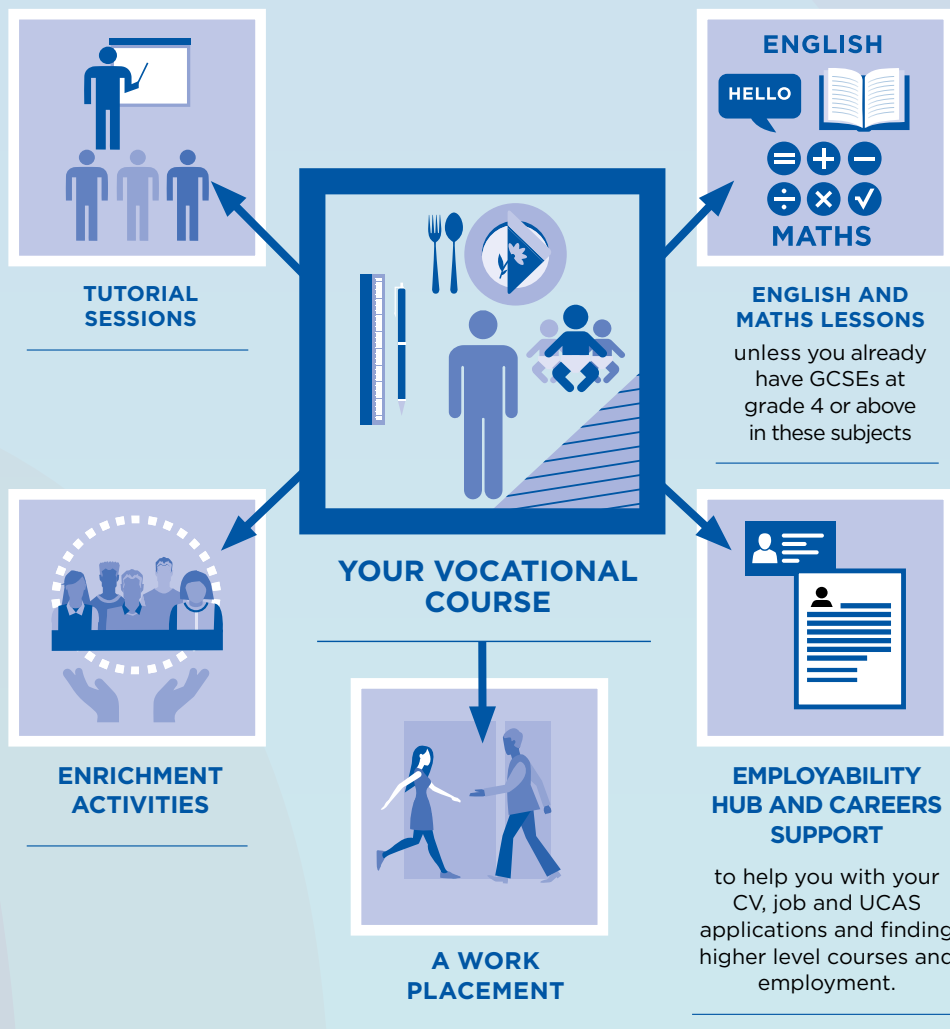


## COURSES FOR 16-18s

---

**Studying with us means far more than just achieving your vocational qualification. As a 16-18-year-old student, you will be on a study programme, which is designed to give you the skills you need to progress on to further study or a job in your chosen career.**

## A STUDY PROGRAMME CONSISTS OF:



[lewisham.ac.uk/16-18](http://lewisham.ac.uk/16-18)





## COURSES FOR ADULTS

---

**Whether you are returning to study, looking to retrain or want to improve your career, as an adult student, you will join our professional pathway, which is designed to support you with your career goals.**





[lewisham.ac.uk/adults](https://lewisham.ac.uk/adults)

## ALL ADULT LEARNERS HAVE THE OPPORTUNITY TO ACCESS:

### JOB SEEKERS

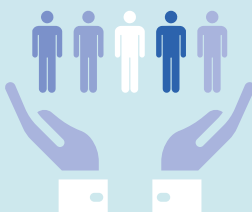
**Free** and impartial careers advice to help you with your CV, job and UCAS applications and finding higher level courses and employment.



**Remote learning materials** and study resources.



**Student Support services**, including learning resource centre and advice and guidance on applying for bursaries or financial support.



# CHOOSING THE RIGHT COURSE FOR YOU

Choosing your next step can be difficult, with many subjects and qualifications offered at different levels.

The level you study will depend on your previous qualifications, skills and experience. Use our Levels Chart to help you find the right level course for you.

Level	Choice of qualifications	Entry requirements	With this qualification you could progress on to...
<b>Entry level 3</b>	Awards, Certificates/ Diplomas, Functional Skills, Foundation Learning, Skills for Life	There are no entry requirements but if you don't have any qualifications you will be asked to take an English and maths test	Level 1 course
<b>Level 1 (Foundation)</b>	BTECs, NVQs, Functional Skills, Foundation Learning Tier Pathways	There are no entry requirements but if you don't have any qualifications you will be asked to take an English and maths test	Level 2 course or apprenticeship
<b>Level 2 (Intermediate)</b>	GCSE grades 9-4, BTECs, NVQs, Functional Skills	Four GCSEs at grades 9 – 3/A* – D (English and maths desirable) or a Level 1 qualification	Level 3 course, apprenticeship or job with training
<b>Level 3 (Advanced)</b>	GCSEs in applied subjects, International Baccalaureate, BTECs, NVQs	Four GCSEs at grade 9-4/A*– C, including English and Maths, or a Level 2 qualification in a related subject and Level 2 Functional Skills English and Maths.	Higher Education, higher level apprenticeship or a wide range of jobs

For the latest entry criteria for each course please visit **[lewisham.ac.uk](http://lewisham.ac.uk)**.



# COURSES

Lewisham College offers a range of courses, including vocational and professional qualifications, apprenticeships, short courses, ESOL programmes and T Levels.

You could study:

Course Area	Page number
T Levels	28
Apprenticeships	30
Business, Accounting and Law	34
Childcare and Early Years	38
Construction and Engineering	40
Creative, Performing and Production Arts	44
ESOL, English and Maths	48
Academy for young People	52
Hair and Beauty	54
Health and Social Care	58
Hospitality and Catering	62
IT, Computing and Digital	66
Sport	70
Supported Learning	72
Teaching and Education	76



## THE NEXT LEVEL QUALIFICATION

**Unlock your potential on a T Level course! T Levels are a brand-new vocational qualification for 16-19s, designed to give you all of the skills you need for your future. They're a two-year qualification designed in collaboration with employers to bring classroom lessons and work experience together.**

On a T Level, you'll spend 80% of your time in the classroom and 20% on a work placement to make sure you develop all of the skills and experience that employers are looking for. This means that whatever your next step is, a T Level will help you to step straight into your chosen career, an apprenticeship or a degree.



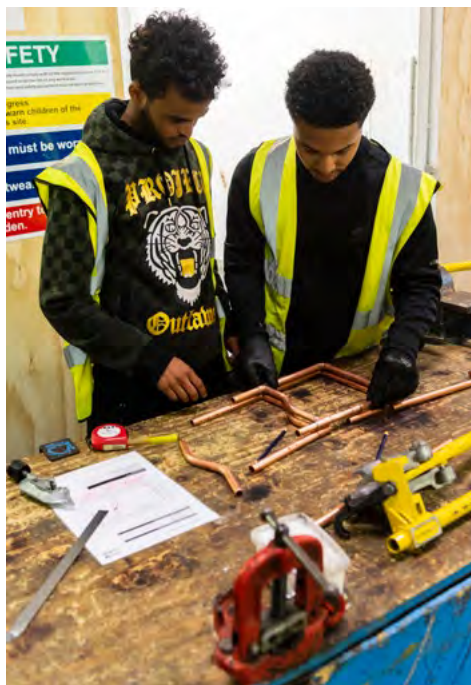




[lewisham.ac.uk/courses/t-levels](https://lewisham.ac.uk/courses/t-levels)

## Lewisham College T Level Courses

- » Digital Support
- » Early Years Educator
- » Supporting Healthcare -  
Supporting the Care of Children and Young People
- » Plumbing and Heating Engineering





# APPRENTICESHIPS

**An apprenticeship combines practical training in a job with study. Being an apprentice means that you can gain the skills and qualifications you need for your chosen career while earning a wage.**

Lewisham College has a successful history of delivering apprenticeships and have a dedicated team who will work with you and an employer in your chosen sector to develop an individual training programme designed to give you the skills and experience you need to succeed.

## As an apprentice you will:

- » Work alongside experienced staff
- » Gain job-specific skills
- » Access excellent progression opportunities for study or work
- » Earn a wage and receive holiday pay
- » Study towards a relevant qualification, which is usually one day per week in college.

## Lewisham College has delivered apprenticeships in a range of roles in the following employment sectors:

### Hospitality and Support Services

Commis Chef  
Production Chef

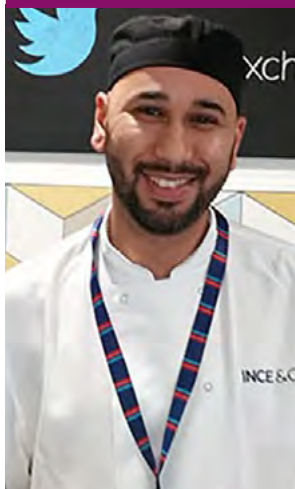
### Business

Accounts or Finance Assistant  
Assistant Accountant  
Digital Technician

### Construction and Engineering

Painter and Decorator  
Property Maintenance Operative  
Carpentry and Joinery  
Bricklayer  
Gas Engineering Operative  
Plumbing and Domestic Heating Technician  
Electrician Technician

## TOUFIK BERNAOUI



### Hospitality Apprentice

#### TOUFIK BERNAOUI

completed his Professional Cookery apprenticeship at Lewisham College. He has since been promoted from Commis Chef to Chef de Partie at French restaurant Le Vacherin in West London.



Toufik said:

"I really enjoyed my apprenticeship. When the Head Chef developed new dishes he trusted me to help, which was so encouraging. I became more confident and it set me up for a great career."









**[lewisham.ac.uk/apprenticeships](https://lewisham.ac.uk/apprenticeships)**



### **Apprenticeships are offered at three different levels:**

- » Intermediate, working towards level 2 qualifications
- » Advanced, working towards level 3 qualifications
- » Higher, working towards level 4 and above qualifications.

To apply for an apprenticeship, you need to register with Lewisham College directly to be matched to future roles or apply for a vacancy on our website at

**[lewisham.ac.uk/apprenticeships](https://lewisham.ac.uk/apprenticeships).**

Once you have registered you will be invited in to the college to meet with our specialist advisers who will make sure that you meet the relevant eligibility criteria and help you decide on the level of apprenticeship you should apply for.

Apprenticeships are available for anyone who is over 16 years old, living in England and not already in full-time education. You can apply if you are still at school and there is no upper age limit for apprenticeships.



## BUSINESS, ACCOUNTING AND LAW

**Whether you would like a new career in business, accountancy, marketing or human resources, or want to rise up the ladder in your current job, our courses will set you on the right track to achieve.**

Learning from tutors who have worked in multi-national companies, management and retail businesses, you will gain valuable skills, knowledge and work experience as part of your course.



**“STUDYING BUSINESS** at Lewisham College has changed my outlook on education and made me believe that I can achieve great things if I work hard.

**Kelly Bridgewater**  
Level 3 Business and  
Administration Diploma



## BUSINESS

If you have a sharp eye for opportunity and a problem-solving mindset, this is the profession for you. Our business courses will give you the skills and knowledge you need to forge your path in this sector, apply now to take the first step.

### Business Studies Courses

Our comprehensive business courses will teach you how to use office systems, manage your time, solve problems and communicate effectively. These courses can lead you to further vocational learning in higher education settings or into an exciting range of roles within business.

#### **Business Administration**

Available at Levels › 1, 2, 3 and 4

#### **Access to Business Studies**

Available at Level › 3

#### **National Extended Diploma in Business**

Available at Level › 3

#### **National Foundation Diploma in Business**

Available at Level › 3



## LAW

A critical and creative mindset with a persuasive edge are the building blocks for a legal career. Whether you dream of becoming a corporate lawyer or giving legal advice to vulnerable people in need, this course will expand your knowledge and teach you how to harness your skills to achieve.

### Professional Business Administration, HR and Law Courses

#### **Business Administration**

Available at Levels › 1, 2, 3 and 4





[lewisham.ac.uk/business](https://lewisham.ac.uk/business)



## ACCOUNTING

Do you have strong numeracy skills and a methodical approach? These skills are essential to the highly lucrative sector of Accounting.

Our courses will hone these skills and develop your expertise, equipping you for work in this field.

### Professional Accounting and Finance Courses

On our accounting courses you will learn key skills in bookkeeping, accounts preparation, calculating tax, sales and purchase ledgers setting you up for further study or to step into the world of work. Our Accounting courses are accredited by the Association of Accounting Technicians (AAT).

#### **Business Administration and Finance**

Available at Level › 2

#### **AAT**

Available at Levels › 1, 2, 3 and 4



## CHILD CARE AND EARLY YEARS

**No two days are the same when you work in early years.**

If you want to work with young children, or already do and need to gain additional qualifications to take the next step in your career, our courses will equip you with the skills, knowledge and experience you need to succeed.

“

**“I HAVE GAINED** an in-depth understanding of child development and a different perspective. The teachers are fair and understanding. They expect a lot of you but that means you get to study in well-organised classes with really motivated students.

**Marta Weremkowicz-Wlosinska**  
Early Years Student



[lewisham.ac.uk/early-years](https://lewisham.ac.uk/early-years)



## Child Care and Early Years Courses

On our Early Years courses you will gain in-depth knowledge on child development, safeguarding, behaviour management, health and safety and theories on children learning and development. A qualification in Early Years can take you to further study and open up a range of career options, including childcare, counselling, early years work, youth and community work and local, national and international policy development.

### Childcare

Available at Level › 1

### Early Years Practitioner

Available at Level › 2

### Diploma for Early Years

Available at Level › 3

### Supporting Teaching and Learning

Available at Level › 3

### Home-based Childminding

Available at Level › 3

### Early Years Educator

T Level Programme



# CONSTRUCTION AND ENGINEERING

**With the building trade booming across the capital, highly skilled construction workers and engineers are in high demand.**

If you enjoy practical work and watching your achievements come to life, studying at our specialist academy in Deptford will give you the tools you need for a fulfilling career with great earning potential.

“



**“THE SKILLS I LEARNT**  
during my course have really  
helped get me where I am today.”

**Omobolaji Raimi**  
Rail Electrical Engineer,  
Telnet Technology Services Ltd and  
Alumni Student





[lewisham.ac.uk/construction](https://lewisham.ac.uk/construction)

## CONSTRUCTION



### Construction Courses

Our practical Construction and Engineering courses will provide you with essential skills in bricklaying, carpentry, plumbing, electrical installation, general maintenance, repairs and much more. The hands-on experience you will gain in our specialist workshops and facilities can give you the platform you need for further study or to take your first step in the world of work.

#### **Multi-Skills**

Available at Level › 1

#### **Bricklaying**

Available at Levels › 1 and 2

#### **Carpentry and Joinery**

Available at Levels › 1 and 2

#### **Electrical Installation**

Available at Levels › 2 and 3



[lewisham.ac.uk/construction](http://lewisham.ac.uk/construction)



## Construction Courses

### **Building Maintenance, Multi-trade Repair and Refurbishment Operations**

Available at Level › 2

### **Introduction to Plumbing**

Short course

### **Painting and Decorating**

Available at Levels › 1 and 2

### **Wall and Floor Tiling**

Available at Level › 2

### **Introduction to Construction**

Available at Level › Entry/Foundation Level

### **Construction**

Available at Level › Entry Level

### **Diploma in Dry Lining**

Available at Level › 2

### **Diploma in Plumbing Studies**

Available at Levels › 1 and 2

### **Water Regulations**

Available at Level › Industry Qualification

### **Plumbing and Heating Engineering**

T Level Programme



**2,793,840** people are estimated to be employed in the **UK construction industry** in **2023**. Companies are looking to recruit more women to bring their skills into the engineering, property and construction sector.

## ENGINEERING

If you dream of designing solutions and watching these come to life, engineering may be the profession for you. Our courses will develop your knowledge and skills to give you a boost in this exciting and lucrative sector. Studying at our campus in Deptford, our new engineering courses offer a pathway to higher level programmes and careers in engineering design, mechanical engineering, electronics, design and more.

### Engineering Courses

#### Plumbing and Heating Engineering

T Level Programme





## CREATIVE, PERFORMING AND PRODUCTION ARTS

**Lewisham College has a long history of providing fantastic courses in creative arts covering art and design, performing and production arts. Our courses are delivered in our well-equipped studios with a 90-seat theatre, spacious dance and technical theatre studios, rehearsal rooms, computer editing suites and recording studios.**

You will learn with industry-trained tutors and professional technical staff and have the opportunity to participate in regular visits to galleries and museums. You will also be able to exhibit your work at our exciting shows.

Our Creative Arts courses will provide you with opportunities to explore, develop and test your skills of the creative arts within a qualification structure that is stimulating and challenging, supporting you to reach your full potential and progress to higher levels of study and employment.





## ART AND DESIGN

If you dream of a career in the Creative Arts, our courses are tailored to help you turn this into a reality. At Lewisham College, you can learn from the best and use our excellent reputation to your advantage, setting you up to achieve your goals.

### Art and Design Courses

Accredited by the University of the Arts London (UAL), our Art and Design courses will give you the opportunity to explore the materials, methods and processes that support art and design activities through a range of technical skills. You will learn how to do research methodology, expression of thought, justification of concept and evaluation of product. Whether you already know the specific creative career path you wish to follow or want to progress on to Higher Education or employment in the Creative Industries, these diverse courses can help you achieve your goals.

#### **UAL Diploma: Art and Design**

Available at Level › 2

#### **Creative Practice: Art Design and Communication**

Available at Level › 3



[lewisham.ac.uk/creative-arts](https://lewisham.ac.uk/creative-arts)



## ROSE BRUFORD PARTNERSHIP

Lewisham College and Rose Bruford College of Theatre and Performance are working in partnership to deliver a new creative and performing arts provision.

This includes a range of courses for 16-18s and adults, which are designed to nurture young creatives and performers to develop skills in performance, production, art and design and masterclasses in lighting, sound operation, acting and singing.

## PERFORMING AND PRODUCTION ARTS

Do you have a passion for dance, acting and singing? To develop these talents apply today and expand your skills to kickstart your career.

### Performing and Production Arts Courses

#### **UAL Diploma Production Arts**

Available at Levels › 3

#### **UAL Diploma in Performing Arts and Production: Drama**

Available at Level › 3



**Creative Industries**  
contributed over **£100 billion** to the **UK economy**  
in **2020**.

## CREATIVE MEDIA TECHNOLOGY AND COMMUNICATION

Do you love the creativity and buzz of performance but prefer to be behind the scenes? A career in Production Arts may be for you. At Lewisham College, we explore, develop and test your creativity while teaching you essential skills to achieve your career ambitions.

### Creative Media Technology and Communication Courses

#### **Diploma in Creative Media Production: Media, Sports Journalism and Marketing**

Available at Level › 3

#### **Extended Diploma in Creative Media Production: Media, Sports Journalism and Marketing**

Available at Level › 3



## ESOL, ENGLISH AND MATHS

**No matter where you see yourself in the future, you need to have good English and maths skills to find a job and move up the career ladder.**

If English isn't your first language or if you left school without the qualifications you need, our courses will help you gain these vital skills and even have fun while doing so.

**Studying ESOL, English or maths can help you to progress to further study and:**

- » Improve your future employment prospects
- » Gain civic engagement and integration to feel part of and connected to wider society
- » Develop skills for everyday life activities
- » Access services in your local community





[lewisham.ac.uk/englishandmaths](http://lewisham.ac.uk/englishandmaths)

## ENGLISH AND MATHS

English and maths skills are essential for any role. At Lewisham College we offer courses at beginners' level up to and including GCSE for both young people and adults so you can master these skills no matter what qualifications you have. These skills are the foundations of your future so apply now to start building your tomorrow.

### FATOUMATA

#### ESOL and GCSE Student

**FATOUMATA ARRIVED IN THE UK WHEN SHE WAS 17.** She had never been to school, so was unable to read or write in any language and could not speak English.

She was referred to Lewisham College and started on her journey studying ESOL before going on to gain her GCSEs at the college.



Fatoumata said: **“THE SKILLS I GAINED AT LEWISHAM COLLEGE** were essential to helping me live and work in the UK. I am now employed at a large, busy hotel in the heart of London and that wouldn't have been possible without the college.”

## ENGLISH FOR SPEAKERS OF OTHER LANGUAGES (ESOL)

Learning a second language can be challenging, which is why we offer ESOL courses at multiple levels with encouraging and experienced staff to support you. Whether you want to improve your speaking, listening, reading or writing skills, or all of the above, these courses are designed to help you achieve all of this and more.

You will learn about British culture and citizenship and gain vital skills for work, life or further study.

### ESOL courses will help you to:

- » Improve your speaking, listening, reading and writing skills
- » Be part of the College and take part in activities and trips to assist your language learning
- » Improve your employability skills, including CV writing and interview techniques
- » Learn about British culture and citizenship
- » Get ready for future courses or employment.

All ESOL students take an initial assessment test before they enrol to make sure they are in the right class for their level of English.

### ESOL Courses

- » **ESOL for Adults**
- » **English for Adults**
- » **Maths for Adults**
- » **ESOL Study Programme for 16-18s**



[lewisham.ac.uk/esol](http://lewisham.ac.uk/esol)



## ESOL Vocational Pathways for adults

- » **ESOL English for Bookkeeping**
- » **ESOL English for AAT**
- » **ESOL English for Classroom Assistant**
- » **ESOL English for Teaching Assistant**
- » **ESOL English for Health, Social Care and Childcare**
- » **ESOL English for Office Skills**
- » **ESOL English for Progression at Work**



## ACADEMY FOR YOUNG PEOPLE



## YOUTH ENTRY TO FURTHER EDUCATION (YEFE)

This full-time study programme is for native speakers of English covering Entry Level to GCSE level. It includes Maths, English, ICT, Personal and Social Development, Employability Skills, Vocational tasters, Tutorials and Language GCSEs for bilingual students (depending on availability) as well as enrichment trips and projects throughout the year and excellent progression routes into further vocational courses.

### Youth Entry to Further Education (YEFE) Courses

#### Maths and English Study Programmes for Young People





## ELECTIVE HOME EDUCATION (EHE)

This part-time pre-GCSE and GCSE study programme is for native speakers of English up to a maximum of 12 hours per week and can include a combination of Pre-GCSE and/or GCSEs in Maths, English, Combined Science (GCSE only), Art (Pre-GCSE only), Sociology (Pre-GCSE only), Language GCSEs for bilingual students (depending on availability) and Tutorials.

Courses are available for people aged 14-16 years old who are registered with the local authority in Elective Home Education with progression routes to further vocational study.

### Elective Home Education (EHE) Courses

#### GCSE Programmes for Young People



## HAIR AND BEAUTY

**On our beauty courses you will have the opportunity to train in our commercial salon, gain valuable work experience and take part in industry-recognised competitions, preparing you for an exciting career such as a spa therapist, hairdresser or even setting up your own business.**

There are over **43,000** Hair and Beauty businesses in the UK.





“



**THE COURSE GAVE ME** so much, both professionally and personally. I gained a lot of confidence within myself and a new sense of determination to persevere and step out of my comfort zone.”

**Ruscheyne Humphrey**

Lewisham College Beauty Therapy  
Lecturer and Alumni

## HAIR

If you love creating new looks and styles our Hair courses will provide you with the opportunity to expand your knowledge and give you the boost you need to work in this sector.

### Hair Courses

On our Hair courses you will gain the necessary skills in barbering, women's hairdressing and beauty therapy. You will learn how to understand customer requirements, cutting and colouring hair, styling, blow drying and using electro therapy. Our courses can lead you to further study or into real-work environments.

#### **Barbering**

Available at Level › 2

#### **Hair and Beauty**

Available at Level › 1

#### **Women's Hairdressing**

Available at Levels › 2 and 3



[lewisham.ac.uk/hair-beauty](https://lewisham.ac.uk/hair-beauty)



## BEAUTY

Our Beauty courses will help you to build your skills and arm you with the knowledge required to turn your passion for beauty into a career.

### Beauty Courses

#### **Beauty Specialist Techniques**

Available at Level > 2

#### **Beauty Therapy**

Available at Level > 3





**T' IEN**  
HEALTH & BEAUTY

## T'ien Hair and Beauty Salon

All students experience working with commercial clients at our T'ien Hair and Beauty Salon on campus in Lewisham.

Practical skills are delivered by experienced teaching teams using industry-recognised tools and products in our fully equipped salon, which utilises technology and viewing screens to support practical learning, enabling you to view demonstrations and close-up shots as many times as you need to during your practice.

There will also be opportunities to take part in educational visits and external workshops and competition work.





## HEALTH AND SOCIAL CARE



**There are few careers where you can make as big a difference to people's lives as you can in health and social care.**

If you enjoy helping people, studying one of our courses will open the door to a rewarding and heartwarming career and help you to progress in the workplace.



### **STUDYING AT LEWISHAM**

**COLLEGE** is helping me to prepare for becoming a nurse. Both the campus and online classes work well, and I am improving my knowledge ready to take on new challenges.

**Latifa Sesay**

Health and Social Care Student



## Health and Social Care Courses

Our Health and Social Care courses aim to meet individual needs and are taught in supportive, friendly learning environments. Whether you have previous experience, or are a new learner, our dedicated teaching staff are committed to helping you achieve your learning goals. Our courses lead to recognised qualifications that will enable you to go on to higher level studies or to a starting point for a successful career in one of the most challenging and rewarding sectors.

### **Health and Social Care**

Available at Levels › 1, 2 and 3

### **Counselling Skills**

Available at Levels › 2, 3 and 4

### **Adult Social Care**

Available at Levels › 2 and 3

### **Access to Nursing**

Available at Level › 3

Continued...



**1.52 million** people work  
in **Adult Social Care** in  
the UK.







[lewisham.ac.uk/health](https://lewisham.ac.uk/health)



## Health and Social Care Courses

### **Supporting Healthcare - Supporting the Care of Children and Young People**

T Level Programme





# HOSPITALITY AND CATERING

**Do you have a passion for food and culinary arts? At Lewisham College, you can turn your passion into a creative, exhilarating and rewarding career in a professional kitchen.**

Our catering and hospitality courses offer students the opportunity to train in our real-work environments, with multiple commercial kitchens and our own Phoenix restaurant, which is open to the public.

“



**“MY TIME AT  
LEWISHAM COLLEGE** was very important. It gave me the set of skills I needed to develop into the chef I am today. I'd like to say a big thanks to all of my college lecturers.”

**Mark Morris**

Unit Manager, Compass and  
Alumni Student



## Phoenix Restaurant

**The Phoenix Restaurant offers local people and businesses a fine-dining experience with a difference. Located in a beautiful, light-filled space within Lewisham College, the restaurant is run by the College's talented trainee chefs.**

The Phoenix serves delicious, professional quality food, inspired by the best of British and international cuisine, at very competitive prices. With a focus on high quality ingredients and innovative combinations of flavours and textures, each dish is prepared with great attention to detail and reflects the passion and skill of the trainee chefs. Diners can enjoy a relaxed ambience within a contemporary setting with attentive, friendly service delivered by the College's hospitality students.

Trained to top industry standards, graduates of the College's School of Hospitality have gone on to work at leading establishments such as One Aldwych, The Ritz Hotel and Tom Aitkens.



**Train as a chef with us**  
and your next step could  
be a **5-star hotel** or  
**Michelin** starred restaurant.



[lewisham.ac.uk/hospitality](https://lewisham.ac.uk/hospitality)



## Catering and Hospitality Courses

Our dynamic Hospitality and Catering courses will give you hands-on experience in preparing ingredients, using the latest equipment safely and developing your culinary skills. Our teaching team will help you shape your study programme so you can realise your career ambitions in a range of specialists subjects.

### **Introduction to Culinary Skills**

Available at Level › 1

### **Diploma in Advanced Professional Cookery**

Available at Level › 3

### **Diploma in Culinary Skills**

Available at Level › 2

### **IHG Hotels and Resorts SWAP Programme**





# IT, COMPUTING AND DIGITAL

**IT, Computing and Digital is at the heart of every sector. It is the backbone of the modern world and people with these skills are essential to businesses across the globe.**

Our courses will give you the opportunity to gain the qualifications you need and prepare you for a fascinating and vitalising career in the future.

**By 2025**, it is expected that more than **149 million new technology jobs** will be available in areas such as software development, cloud, data, artificial intelligence and security. The skills to succeed in an increasingly digital economy have never been more important.







## IT

If you have a passion for technology, a career in the vibrant and exciting sector of IT could be for you. Apply now for our IT courses, which are customised to expand your knowledge and skills, empowering you to succeed in this sector.

### Information Communication Technology and Computing Courses

The need for digital skills is important in our evolving tech world. Our wide range of specialist IT courses offer you the opportunity to develop skills within web design, systems support, computer maintenance, social media, visual programming and more.

#### **Diploma in Information Technology**

Available at Level › 1

#### **Extended Diploma in Information Technology**

Available at Level › 3

#### **Extended Certificate Information and Creative Technology**

Available at Levels › 1 and 2

#### **National Foundation Diploma in Information Technology**

Available at Level › 3

#### **Access to Higher Education in Computing**

Available at Level › 3

## Future of Digital Payment Winners

**Two former Lewisham College students have won a European innovation competition award on digital payment systems, held in Milan, Italy.**

Nowman Islam and Showrov Abul successfully completed their Extended Diploma in IT at the College before going on to study Software Engineering at Queen Mary University of London, one of the top universities in the UK.

Nowman and Showrov battled it out against seven other teams of students at the 'Future of Digital Payment' competition to be awarded second place by a jury, which included major European banks such as Bank of Italy and Unicredit. The event was run by multinational company Reply.

Adu Antwi, Head of Faculty at Lewisham College, said: "I'm delighted to see that these talented former students have won recognition for their fantastic coding abilities on the European stage. It really does demonstrate that the IT foundations we provide students with at the College are the basis for building advanced skills which can take you anywhere."





[lewisham.ac.uk/digital](https://lewisham.ac.uk/digital)

## COMPUTING AND DIGITAL

Are you innovative and interested in the possibilities technology can bring? If the answer is yes you may be suited to a career in Computing. Our courses are designed to hone your skills and develop your knowledge to kickstart your career.

### Professional Computer Application, Systems and Networking Courses

#### **Award in IT Application Specialist Programme**

Available at Levels › 1 and 3

#### **Diploma in ICT Systems Support Specialist**

Available at Level › 2

#### **Cisco CCNA Networking**

Available at Level › 3

#### **Computer Maintenance Essentials**

Available at Level › 2

#### **Web Design for Beginners**

Available at Level › 1

#### **Essential Digital Skills**

Available at Levels › 1, 2 and 3

#### **Digital Support**

T Level Programme



## SPORT

Do you want an active and dynamic career? Whether you dream of scaling the heights of sport or want to help others achieve their fitness goals, our specialist training can give you the skills you need to succeed.

Sports is worth  
**£39 billion** to the  
UK economy.





[lewisham.ac.uk/sport](http://lewisham.ac.uk/sport)



## Sport Courses

Our Sport courses can prepare you for a range of different opportunities and career choices in sport or leisure facility management, sports coaching, fitness instructing or sports development with further qualifications or training. Learn in our well-equipped facilities and get hands-on experience to prepare for progression to employment or higher education.

### **Sport**

Available at Levels › 1 and 2

### **Sports Coaching and Development**

Available at Level › Level 3

### **Diploma in Creative Media Production: Media, Sports Journalism and Marketing**

Available at Level › 3

### **Extended Diploma in Creative Media Production: Media, Sports Journalism and Marketing**

Available at Level › 3





## SUPPORTED LEARNING

**We want every student to achieve their potential and we offer a range of supported learning courses for young people with high needs.**

Every learner will become part of a small, friendly group of students who learn at their own pace. As well as our own programmes we also offer support to those who are studying on other courses, including in-class and support for people

with autism, Asperger Syndrome, dyslexia, physical disabilities, visual and hearing impairments and mental, personal care, health needs.

We will help you decide which course is best for you when you come for an interview. If you would like to visit us please attend an information event, which we hold during the day so you can meet our students and visit some classes.

**For more information or to apply, please contact [lewisham.ac.uk/supported-learning](http://lewisham.ac.uk/supported-learning)**





## Supported Learning Courses

### **Pathway to Independence**

Available at Level › Pre-Entry

### **Vocational Tasters**

Available at Level › Entry

### **Preparation for Work Cafe Skills**

Available at Level › Entry

### **Preparation for Work Horticulture Skills**

Available at Level › Entry

### **Skills for Catering**

Available at Levels › Entry 3 and Level 1

### **Skills for Customer Service**

Available at Level › Entry 3

### **Skills for Performing Arts**

Available at Levels › Entry 3 and Level 1

### **Skills for Art and Design**

Available at Levels › Entry 3 and Level 1

Continued...





[lewisham.ac.uk/supported-learning](http://lewisham.ac.uk/supported-learning)



## Supported Learning Courses

### **Preparation for Internship**

Available at Level › Entry

### **Move on to Volunteering**

Available at Level › Entry

### **Preparation for Adult Life and Work**

Available at Level › Pre-Entry

### **Preparation for Transition**

Available at Level › Pre-Entry

### **Supported Internship Phoenix Housing**

Available at Level › Entry

### **Supported Employment Project with the Three Cs**

Available at Level › Entry

### **Supported Internship Brockley Restaurant**

Available at Level › Entry

### **Supported Learning Internship with Lewisham Council**

Available at Level › Entry





## TEACHING AND EDUCATION



**If you love the idea of inspiring the next generation to learn, a career in teaching could be for you.**

Studying our well-respected teaching qualifications will enable you to gain a variety of skills, from assessment techniques to inclusive teaching approaches, opening the door to a job in one of the most rewarding of professions.

**CELTA** is the most widely recognised English teaching **qualification** in the world and often requested by **employers**.







[lewisham.ac.uk/teaching](https://lewisham.ac.uk/teaching)



## TEACHING AND EDUCATION

Our engaging Teaching and Education courses will give you a range of skills that can help you launch a successful and rewarding career with global work opportunities. You will learn everything from planning classes and key teaching methods, to motivating learners, meeting their needs, record-keeping and more.

### Teaching and Education Courses

**CELTA: Certificate in Teaching English to Speakers of Other Languages**

Available at Level > 5

# FEES AND FUNDING

**Studying at Lewisham College is an investment in your future. It is important to us that attending college is affordable and that you have access to any financial support for which you are eligible.**

The fees you will pay will be determined by the course you enrol on and your own personal circumstances. Generally speaking, if you are aged 16-18 and a British citizen, you will not have to pay course fees but you may need help with other essential costs such as books, travel, equipment and childcare.

The College also offers many courses for adults that are either free or partially funded.





## Financial support

Our Student Support team can help you to apply for additional bursaries or funding, including:

### » 16+ Oyster card

This scheme offers free travel on TFL bus routes if you are 16-18 years old and live in a London borough, or half-price if you don't live in a London borough.

### » Free college meals

You could be eligible for free meals at College if you are under 18 and you, or your parent or carer, receives benefits such as Universal Credit

### » Care to Learn scheme

Successful applicants of this scheme receive up to £175 a week towards childcare costs while you study if you are under 20 and a parent.

### » Totum Card

The National Union of Students (NUS) Totum Card costs £12 per year (in 2021) and gives you access to discounts for eating out, shopping, music, travel and more.

### » National 16-19 bursary

Successful applicants of this bursary receive funds for course related expenditure if you have a household income of £28000 or below.

### » Vulnerable Young Person bursary

If you are a young person in care, care leaver, young person, receiving income support, you could apply for funds to support your studies.

### » Council bursaries

Some London boroughs offer student bursaries to their young residents who are in education and training.

Visit the Student Services team in each campus or email [studentsupport@lewisham.ac.uk](mailto:studentsupport@lewisham.ac.uk) for further advice and guidance on applying for a bursary or accessing financial support. Information correct at the time of going to print, please visit [lewisham.ac.uk/finance](http://lewisham.ac.uk/finance) for the latest information.



## CONTACT US

Our team of Advisors are available to help you find out more about all of our courses and provide advice and guidance on how you can take the next step towards your future career.

If you would like to get in touch with Lewisham College, you can talk to us on our website or call/email us using the details below.

### **Lewisham College**

Lewisham Way, SE4 1UT

**020 3757 3000 | [info@lewisham.ac.uk](mailto:info@lewisham.ac.uk)**

**Apply today at [lewisham.ac.uk](http://lewisham.ac.uk)**



Lewisham College aims to provide the most up-to-date information in its prospectuses and on its website. However, it may be necessary to move or withdraw courses due to unforeseen circumstances. Where a course is cancelled or amended in any way to that advertised, the College will try to transfer students to an alternative course, should one exist that is appropriate and available but the College cannot guarantee the provision of all courses advertised in this guide or on the website. You are, therefore, advised when making an application to or enrolment with Lewisham College to satisfy yourself as to any amendments or alterations that may affect your particular course and the course fees in place when you enrol, which will supersede any previously advertised.

All courses are subject to validation, availability, eligibility and additional support requirements. You will not be guaranteed a place on a course until you have fully enrolled and received your Learning Agreement. Please visit **[lewisham.ac.uk](http://lewisham.ac.uk)** for further information.

# Follow us on social



/Lewishamcollegelondon



@LewishamCollege



/lewishamcollegelondon



/company/lewisham-college



@lewishamcollege





NOTES:

Lined area for notes.

NOTES:

Lined area for notes.

# LEWISHAM COLLEGE



## CONTACT US

### LEWISHAM COLLEGE




**Lewisham Way Campus**  
Lewisham Way  
SE4 1UT

**Deptford Bridge Campus**  
2 Deptford Church Street  
SE8 4HH



**lewisham.ac.uk | 020 3757 3000 | info@lewisham.ac.uk**

### Follow us on social

 /Lewishamcollegelondon  
 /lewishamcollegelondon  
 /@lewishamcollege

 @LewishamCollege  
 /company/lewisham-college